



Datasheet for ABIN959121  
**anti-Fractin antibody**



[Go to Product page](#)

1 Image

Overview

Quantity:	100 µL
Target:	Fractin
Reactivity:	Human, Rat
Host:	Rabbit
Clonality:	Polyclonal
Application:	Western Blotting (WB), Immunohistochemistry (IHC)

Product Details

Immunogen:	Synthetic peptide taken from the C terminus of the 32-kDa actin fragment  Type of Immunogen: Synthetic peptide
Specificity:	Specific for the ~ 32 kDa fractin protein in Western blots with no reactivity to intact actin. There is often a ladder of smaller bands in cells or culture or in vivo preparations due to further degradation by other proteases.

Target Details

Target:	Fractin
Abstract:	<a href="#">Fractin Products</a>

Application Details

Application Notes:	Approved: IHC (1:100), WB (1:1000)
--------------------	------------------------------------

## Application Details

Comment: Target Species of Antibody: Human

Restrictions: For Research Use only

## Handling

Format: Liquid

Concentration: Lot specific

Buffer: neat serum. Contains no preservative.

Preservative: Without preservative

Handling Advice: Aliquot to Avoid freeze/thaw cycles. Store undiluted.

Storage: -20 °C

Storage Comment: Store at -20°C. Aliquot to avoid freeze-thaw cycles. Store undiluted.

## Images

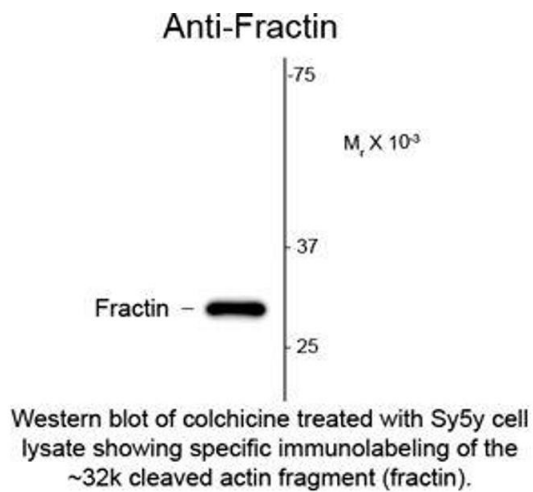


Image 1.