



[Go to Product page](#)

Datasheet for ABIN959387

## anti-TCF7L2 antibody (N-Term)

### 4 Images

#### Overview

Quantity:	50 µL
Target:	TCF7L2
Binding Specificity:	N-Term
Reactivity:	Human, Rat, Mouse
Host:	Rabbit
Clonality:	Polyclonal
Conjugate:	This TCF7L2 antibody is un-conjugated
Application:	Western Blotting (WB), ELISA, Immunohistochemistry (IHC), Immunohistochemistry (Paraffin-embedded Sections) (IHC (p))

#### Product Details

Brand:	IHC-plus™
Immunogen:	Synthetic peptide Type of Immunogen: Synthetic peptide
Isotype:	IgG
Purification:	Immunoaffinity purified

#### Target Details

Target:	TCF7L2
Alternative Name:	TCF7L2 / TCG4 ( <a href="#">TCF7L2 Products</a> )

## Target Details

---

Background:	Name/Gene ID: TCF7L2 Family: Transcription factor  Synonyms: TCF7L2, HMG box transcription factor 4, HTCF-4, T-cell factor-4 variant X2, T-cell factor 4, Transcription factor 7-like 2, TCF-4
Gene ID:	6934
UniProt:	<a href="#">Q9NQB0</a>
Pathways:	<a href="#">WNT Signaling</a> , <a href="#">Positive Regulation of Peptide Hormone Secretion</a> , <a href="#">Peptide Hormone Metabolism</a> , <a href="#">Regulation of Hormone Metabolic Process</a> , <a href="#">Carbohydrate Homeostasis</a> , <a href="#">Stem Cell Maintenance</a> , <a href="#">Protein targeting to Nucleus</a>

## Application Details

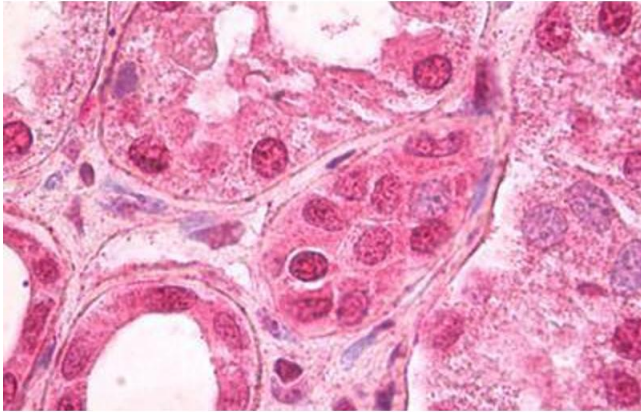
---

Application Notes:	Approved: ELISA (1:80000), IHC, IHC-P (5 µg/mL), WB (1:200 - 1:1000)
Comment:	Target Species of Antibody: Human
Restrictions:	For Research Use only

## Handling

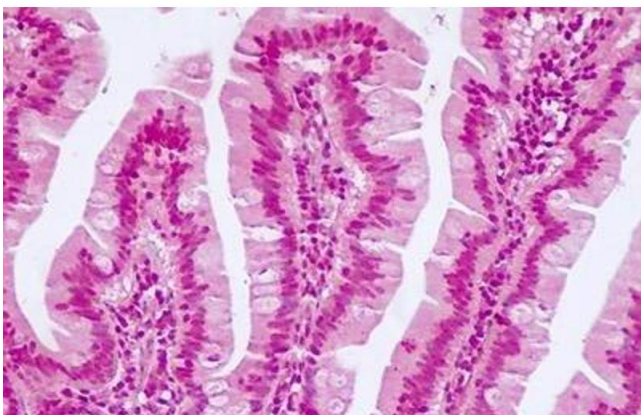
---

Format:	Liquid
Concentration:	Lot specific
Buffer:	PBS (without Mg <sup>2+</sup> , Ca <sup>2+</sup> ), pH 7.4, 150 mM sodium chloride, 0.02 % sodium azide, 50 % glycerol
Preservative:	Sodium azide
Precaution of Use:	This product contains Sodium azide: a POISONOUS AND HAZARDOUS SUBSTANCE which should be handled by trained staff only.
Handling Advice:	avoid freeze thaw cycles.
Storage:	4 °C, -20 °C
Storage Comment:	Short term 4°C, long term aliquot and store at -20°C, avoid freeze-thaw cycles.



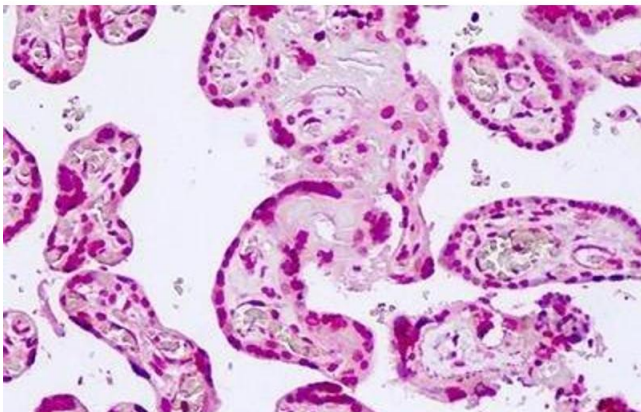
#### Immunohistochemistry

**Image 1.** Anti-TCF7L2 antibody IHC staining of human kidney. Immunohistochemistry of formalin-fixed, paraffin-embedded tissue after heat-induced antigen retrieval. Antibody ABIN959387 concentration 5 ug/ml.



#### Immunohistochemistry

**Image 2.** Anti-TCF7L2 antibody IHC of human small intestine.



#### Immunohistochemistry

**Image 3.** Anti-TCF7L2 antibody IHC of human placenta.

Please check the [product details page](#) for more images. Overall 4 images are available for ABIN959387.