

Datasheet for ABIN959436
anti-ITGA3 antibody (Cytoplasmic Domain)



[Go to Product page](#)

1 Image

Overview

Quantity:	0.1 mg
Target:	ITGA3
Binding Specificity:	Cytoplasmic Domain
Reactivity:	Human
Host:	Mouse
Clonality:	Monoclonal
Conjugate:	This ITGA3 antibody is un-conjugated
Application:	Western Blotting (WB), Immunohistochemistry (IHC), Immunocytochemistry (ICC), Immunohistochemistry (Frozen Sections) (IHC (fro))

Product Details

Immunogen:	Synthetic peptide corresponding to the cytoplasmic domain of the integrin subunit alpha-3A including an additional N-terminal cysteine (CRTRALYEAKRQKAEMKSQPSETERLTDDY) coupled to keyhole limpet hemocyanin Type of Immunogen: Synthetic peptide
Clone:	29A3
Isotype:	IgG1
Specificity:	Recognizes specifically the cytoplasmic domain of integrin subunit alpha-3A which is present in the basal cell layer in skin, glomeruli, Bowman's capsules and distal tubuli in kidney, all vascular and capillary endothelia in brain, heart and skin, and vascular smooth muscle cells in heart. A

Product Details

broad species reactivity is expected because of the conserved nature of the epitope.

Purification: Purified

Target Details

Target: ITGA3

Alternative Name: ITGA3 / CD49c ([ITGA3 Products](#))

Background: Name/Gene ID: ITGA3
Family: Integrin

Synonyms: ITGA3, Alpha3 integrin, CD49c antigen, CD49C, GAPB3, Integrin alpha-3, FRP-2, VCA-2, VLA-3 subunit alpha, VL3A, VLA3a, Galactoprotein B3, GAP-B3, ILNEB, Integrin alpha3, MSK18

Gene ID: 3675

UniProt: [P26006](#)

Pathways: [CXCR4-mediated Signaling Events](#), [Integrin Complex](#)

Application Details

Application Notes: Approved: ICC, IHC, IHC-Fr (1:100 - 1:200), WB (1:100 - 1:1000)

Not recommended for: IHC-P

Comment: Target Species of Antibody: Human

Restrictions: For Research Use only

Handling

Format: Liquid

Concentration: Lot specific

Buffer: PBS containing 0.09 % sodium azide

Preservative: Sodium azide

Precaution of Use: This product contains Sodium azide: a POISONOUS AND HAZARDOUS SUBSTANCE which should be handled by trained staff only.

Handling Advice: avoid freeze thaw cycles. Store undiluted.

Handling

Storage: 4 °C,-20 °C

Storage Comment: Short term 4°C, long term aliquot and store at -20°C, avoid freeze-thaw cycles. Store undiluted.

Images

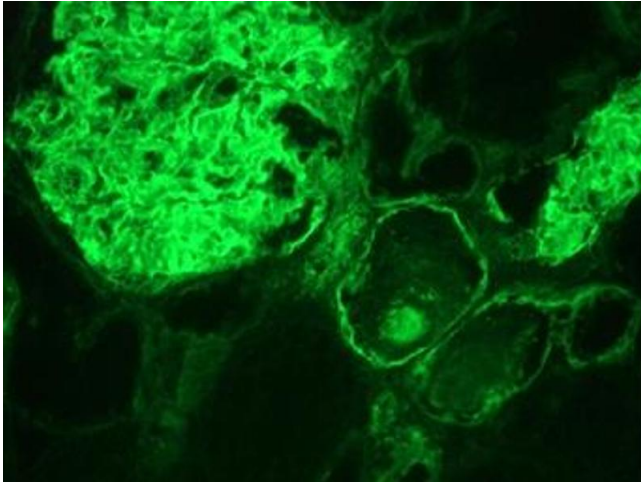


Image 1.