



[Go to Product page](#)

Datasheet for ABIN959483
anti-pan Keratin antibody

2 Images

Overview

Quantity:	0.1 mg
Target:	pan Keratin (panKRT)
Reactivity:	Human, Rat, Pig, Guinea Pig, Chicken, Dog, Rabbit, Quail, Hamster
Host:	Mouse
Clonality:	Monoclonal
Conjugate:	This pan Keratin antibody is un-conjugated
Application:	Flow Cytometry (FACS), Western Blotting (WB), Immunohistochemistry (IHC), Immunocytochemistry (ICC), Immunohistochemistry (Frozen Sections) (IHC (fro))

Product Details

Immunogen:	Mix of cell preparations containing human cytokeratins
Clone:	RCK103
Isotype:	IgG1
Specificity:	Reacts against cytokeratin 5, amongst others. Stains basal cells in combined and stratified epithelial tissues. It recognizes the stem cell population, including the so-called amplifying cells in the prostate epithelium.
Purification:	Purified

Target Details

Target:	pan Keratin (panKRT)
Alternative Name:	Pan Cytokeratin (panKRT Products)

Application Details

Application Notes: Approved: Flo (1:100 - 1:200), ICC, IHC, IHC-Fr (1:100 - 1:200), WB (1:100 - 1:1000)

Not recommended for: IHC-P

Comment: Target Species of Antibody: Human

Restrictions: For Research Use only

Handling

Format: Liquid

Concentration: Lot specific

Buffer: PBS containing 0.09 % sodium azide

Preservative: Sodium azide

Precaution of Use: This product contains Sodium azide: a POISONOUS AND HAZARDOUS SUBSTANCE which should be handled by trained staff only.

Handling Advice: avoid freeze thaw cycles. Store undiluted.

Storage: 4 °C, -20 °C

Storage Comment: Short term 4°C, long term aliquot and store at -20°C, avoid freeze-thaw cycles. Store undiluted.

Images

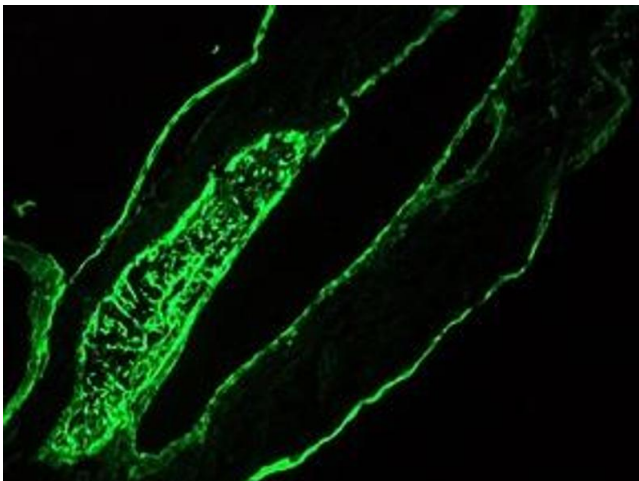


Image 1.

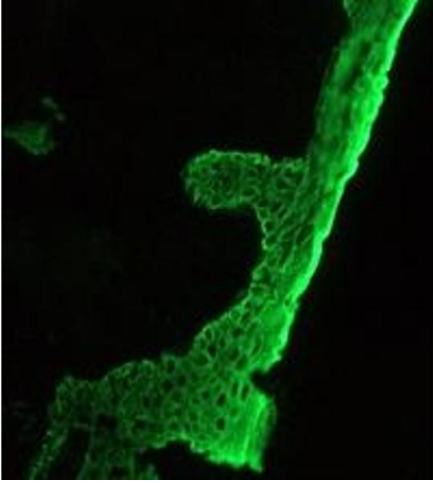


Image 2.