

Datasheet for ABIN959490  
**anti-Keratin 10 antibody**



[Go to Product page](#)

4 Images

Overview

Quantity:	0.1 mg
Target:	Keratin 10 (KRT10)
Reactivity:	Human, Mouse, Rat, Dog, Pig
Host:	Mouse
Clonality:	Monoclonal
Application:	Flow Cytometry (FACS), Immunohistochemistry (IHC), Western Blotting (WB), Immunohistochemistry (Frozen Sections) (IHC (fro)), Immunocytochemistry (ICC)

Product Details

Immunogen:	Cytokeratins from the human epidermis
Clone:	RKSE60
Isotype:	IgG1
Specificity:	Reacts exclusively with cytokeratin 10 which is present in keratinizing stratified epithelia and in differentiated areas of highly differentiated squamous cell carcinomas.
Purification:	Purified

Target Details

Target:	Keratin 10 (KRT10)
Alternative Name:	KRT10 / CK10 / Cytokeratin 10 ( <a href="#">KRT10 Products</a> )
Background:	Name/Gene ID: KRT10

## Target Details

---

Synonyms: KRT10, BIE, BCIE, CK10, Cytokeratin 10, Cytokeratin-10, EHK, Keratin-10, KPP, Keratin 10, CK-10, K10

Gene ID: 3858

UniProt: [P13645](#)

## Application Details

---

Application Notes: Approved: Flo (1:100 - 1:200), ICC, IHC, IHC-Fr (1:100 - 1:200), WB (1:100 - 1:1000)

Not recommended for: IHC-P

Comment: Target Species of Antibody: Human

Restrictions: For Research Use only

## Handling

---

Format: Liquid

Concentration: Lot specific

Buffer: PBS containing 0.09 % sodium azide

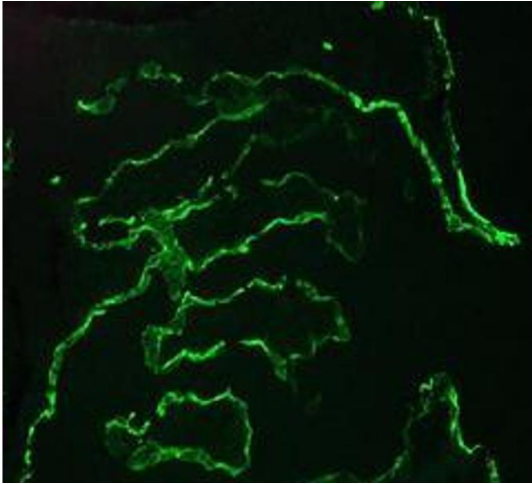
Preservative: Sodium azide

Precaution of Use: This product contains Sodium azide: a POISONOUS AND HAZARDOUS SUBSTANCE which should be handled by trained staff only.

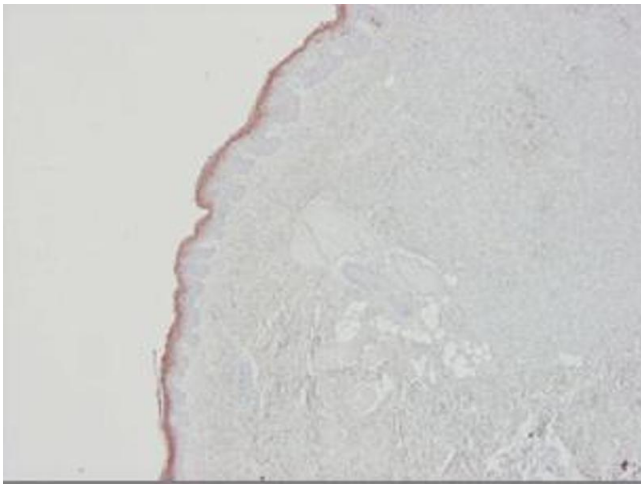
Handling Advice: avoid freeze thaw cycles. Store undiluted.

Storage: 4 °C, -20 °C

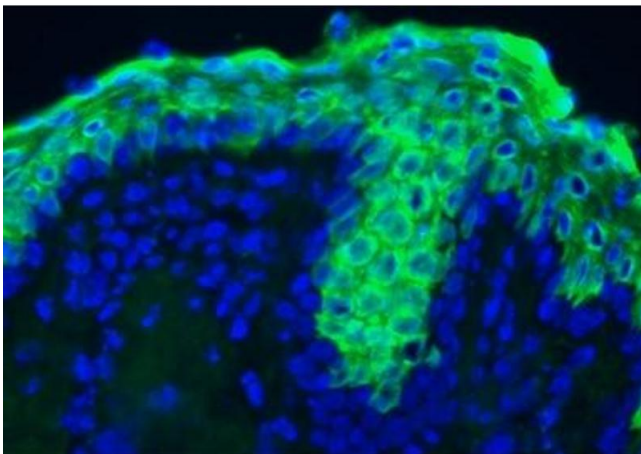
Storage Comment: Short term 4°C, long term aliquot and store at -20°C, avoid freeze-thaw cycles. Store undiluted.



**Image 1.**



**Image 2.**



**Image 3.**

Please check the [product details page](#) for more images. Overall 4 images are available for ABIN959490.