

Datasheet for ABIN959499

anti-Reticulon 1 antibody (AA 421-589)**1** Image[Go to Product page](#)

Overview

Quantity:	50 µg
Target:	Reticulon 1 (RTN1)
Binding Specificity:	AA 421-589
Reactivity:	Human, Rabbit, Monkey
Host:	Mouse
Clonality:	Monoclonal
Conjugate:	This Reticulon 1 antibody is un-conjugated
Application:	Western Blotting (WB), Immunohistochemistry (IHC), Immunohistochemistry (Frozen Sections) (IHC (fro)), Immunocytochemistry (ICC), Immunohistochemistry (Paraffin-embedded Sections) (IHC (p)), Flow Cytometry (FACS)

Product Details

Brand:	IHC-plus™
Immunogen:	Small cell lung cancer cell line NCI-H82
Clone:	RNL-2
Isotype:	IgG1
Specificity:	Recognizes an epitope located within the region of amino acids 421-589 of the neuro-endocrine specific protein Reticulon-1A (NSP-A), which is also present in the N-terminal part of Reticulon-1B (NSP-B). In normal tissues, antibody reacts with brain Purkinje cells, pancreatic islet cells, cells in the pituitary gland and some (peripheral) nerve fibers. In addition, a few epithelia show positive staining.

Product Details

Purification: Purified

Target Details

Target: Reticulon 1 (RTN1)

Alternative Name: RTN1 / Reticulon 1 ([RTN1 Products](#))

Background: Name/Gene ID: RTN1
Family: Reticulon

Synonyms: RTN1, Reticulon-1, NSP, Reticulon 1

Gene ID: 6252

UniProt: [Q16799](#)

Application Details

Application Notes: Approved: Flo (1:25 - 1:200), ICC, IHC, IHC-Fr (1:25 - 1:200), IHC-P (10 µg/mL), WB (1:100 - 1:1000)

Comment: Target Species of Antibody: Human

Restrictions: For Research Use only

Handling

Format: Liquid

Concentration: Lot specific

Buffer: PBS containing 0.09 % sodium azide

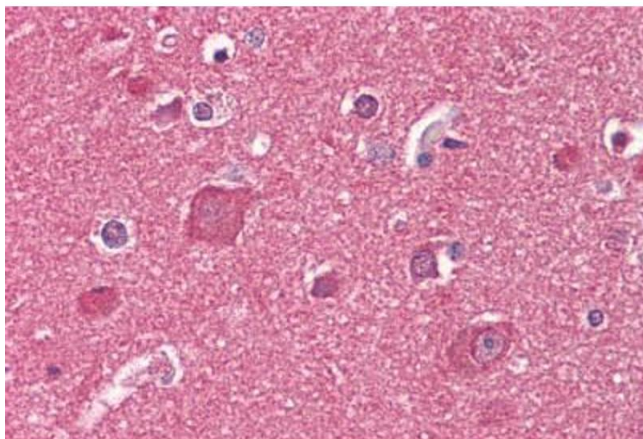
Preservative: Sodium azide

Precaution of Use: This product contains Sodium azide: a POISONOUS AND HAZARDOUS SUBSTANCE which should be handled by trained staff only.

Handling Advice: avoid freeze thaw cycles. Store undiluted.

Storage: 4 °C, -20 °C

Storage Comment: Short term 4°C, long term aliquot and store at -20°C, avoid freeze-thaw cycles. Store undiluted.



Immunohistochemistry

Image 1. Anti-Reticulon 1/2 antibody IHC staining of human brain, cortex. Immunohistochemistry of formalin-fixed, paraffin-embedded tissue after heat-induced antigen retrieval. Antibody ABIN959499 concentration 10 ug/ml.