

Datasheet for ABIN959520
anti-Actin, gamma 1 antibody[Go to Product page](#)

1 Image

Overview

Quantity:	0.05 mg
Target:	Actin, gamma 1 (ACTG1)
Reactivity:	Human, Mouse, Rat, Chicken, Rabbit, Pig
Host:	Mouse
Clonality:	Monoclonal
Application:	Western Blotting (WB), ELISA, Immunohistochemistry (IHC), Immunohistochemistry (Paraffin-embedded Sections) (IHC (p)), Flow Cytometry (FACS), Immunohistochemistry (Frozen Sections) (IHC (fro))

Product Details

Brand:	IHC-plus™
Immunogen:	Peptide comprising the N-terminal nonapeptide of gamma-cytoplasmic actin with an acetylated N-terminus (Ac-EEEIAALVI-COOH) coupled to keyhole limpet hemocyanin through the cysteine residue.
Clone:	2A3
Isotype:	IgG2b
Specificity:	Does not cross react with other actin isoforms. Reacts with human, pig, rabbit, rat, mouse and chicken. The epitope recognized is highly conserved and the antibody is therefore expected to react with many other species.
Purification:	Protein G purified

Target Details

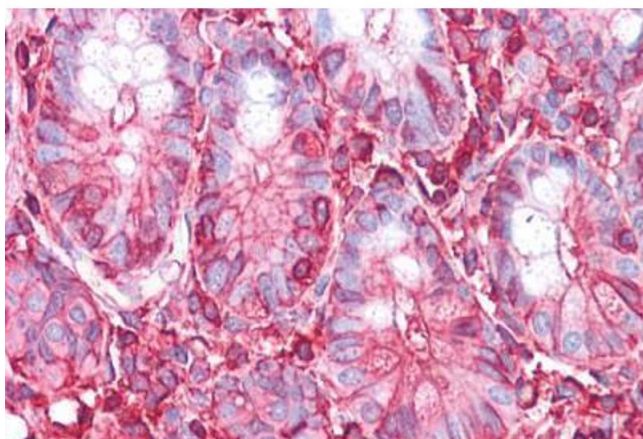
Target:	Actin, gamma 1 (ACTG1)
Alternative Name:	ACTG1 / Gamma Actin (ACTG1 Products)
Background:	Name/Gene ID: ACTG1 Synonyms: ACTG1, ACTG, Actin, gamma 1, BRWS2, Cytoskeletal gamma-actin, DFNA20, Actin, cytoplasmic 2, Gamma-actin, DFNA26
Gene ID:	71
UniProt:	P63261
Pathways:	Myometrial Relaxation and Contraction , Cell-Cell Junction Organization

Application Details

Application Notes:	Approved: ELISA, Flo, IHC, IHC-Fr (1:100 - 1:500), IHC-P (5 µg/mL), WB (1:1000 - 1:5000)
Comment:	Target Species of Antibody: Human
Restrictions:	For Research Use only

Handling

Format:	Liquid
Concentration:	Lot specific
Buffer:	PBS containing 0.09 % sodium azide. Sourced in TCS.
Preservative:	Sodium azide
Precaution of Use:	This product contains Sodium azide: a POISONOUS AND HAZARDOUS SUBSTANCE which should be handled by trained staff only.
Handling Advice:	Avoid repeat freeze-thaw cycles.
Storage:	4 °C, -20 °C
Storage Comment:	Short term: 4°C. Long term: Store at -20°C. Avoid freeze-thaw cycles.



Immunohistochemistry

Image 1. Anti-ACTG1 / Gamma-Actin antibody IHC staining of human small intestine. Immunohistochemistry of formalin-fixed, paraffin-embedded tissue after heat-induced antigen retrieval. Antibody ABIN959520 concentration 5 ug/ml.