

Datasheet for ABIN959585
anti-CES2 antibody (C-Term)



[Go to Product page](#)

3 Images

Overview

Quantity:	50 µg
Target:	CES2
Binding Specificity:	C-Term
Reactivity:	Human
Host:	Rabbit
Clonality:	Polyclonal
Conjugate:	This CES2 antibody is un-conjugated
Application:	Western Blotting (WB), Immunohistochemistry (IHC), ELISA, Immunohistochemistry (Paraffin-embedded Sections) (IHC (p))

Product Details

Brand:	IHC-plus™
Immunogen:	Synthetic peptide from human CES2. Type of Immunogen: Synthetic peptide
Specificity:	Synthetic peptide corresponding to C-terminal residues of human CES2(Carboxylesterase 2 precursor)
Purification:	Immunoaffinity purified

Target Details

Target:	CES2
---------	------

Target Details

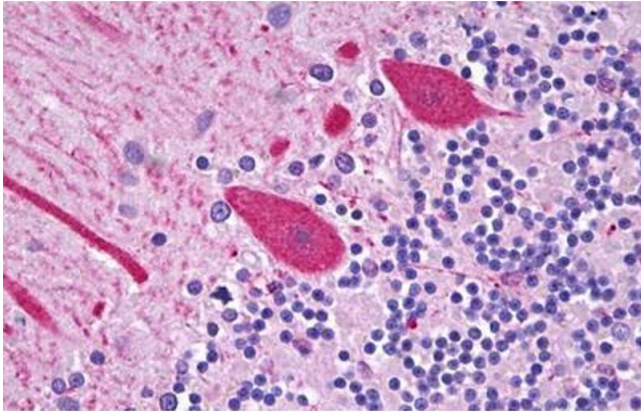
Alternative Name:	CES2 / Esterase (CES2 Products)
Background:	Name/Gene ID: CES2 Synonyms: CES2, Carboxylesterase 2, CE-2, CES2A1, Cocaine esterase, Esterase, ICE, HCE-2, PCE-2
Gene ID:	8824
UniProt:	O00748

Application Details

Application Notes:	Approved: ELISA, IHC, IHC-P (5 µg/mL), WB (1 µg/mL)
Comment:	Target Species of Antibody: Human
Restrictions:	For Research Use only

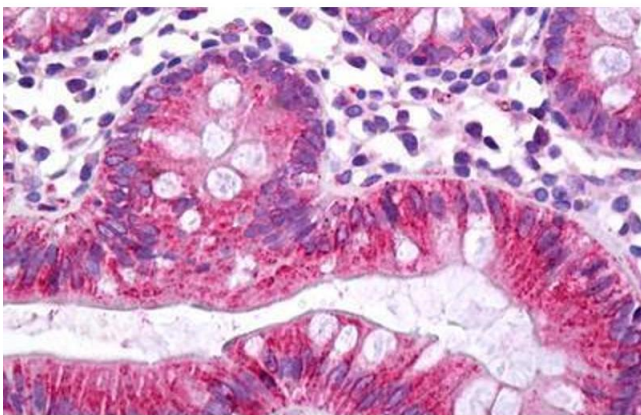
Handling

Format:	Liquid
Concentration:	Lot specific
Buffer:	PBS, 0.01 % sodium azide, 50 % glycerol.
Preservative:	Sodium azide
Precaution of Use:	This product contains Sodium azide: a POISONOUS AND HAZARDOUS SUBSTANCE which should be handled by trained staff only.
Handling Advice:	avoid freeze thaw cycles.
Storage:	4 °C, -20 °C
Storage Comment:	Short term 4°C, long term aliquot and store at -20°C, avoid freeze-thaw cycles.



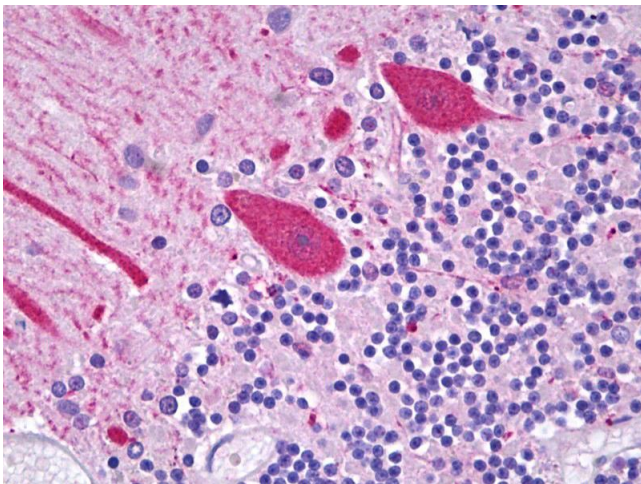
Immunohistochemistry

Image 1. Anti-CES2 / Esterase antibody IHC staining of human brain, cerebellum, purine. Immunohistochemistry of formalin-fixed, paraffin-embedded tissue after heat-induced antigen retrieval. Antibody ABIN959585 concentration 5 ug/ml.



Immunohistochemistry

Image 2. Anti-CES2 / Esterase antibody IHC staining of human colon. Immunohistochemistry of formalin-fixed, paraffin-embedded tissue after heat-induced antigen retrieval. Antibody ABIN959585 concentration 5 ug/ml.



Immunohistochemistry

Image 3. Anti-CES2 / Esterase antibody IHC of human brain, cerebellum, Purkinje cells. Immunohistochemistry of formalin-fixed, paraffin-embedded tissue after heat-induced antigen retrieval. Antibody concentration 5 ug/ml.