

Datasheet for ABIN959586  
**anti-SLC9A9 antibody (C-Term)**



[Go to Product page](#)

1 Image

## Overview

Quantity:	0.1 mg
Target:	SLC9A9
Binding Specificity:	C-Term
Reactivity:	Mouse
Host:	Rabbit
Clonality:	Polyclonal
Conjugate:	This SLC9A9 antibody is un-conjugated
Application:	Western Blotting (WB), ELISA

## Product Details

Immunogen:	Synthetic peptide
	Type of Immunogen: Synthetic peptide
Specificity:	Synthetic peptide corresponding to C-terminal residues of mouse NHE-9 (Sodium/hydrogen exchanger 9 (Na <sup>+</sup> )/H <sup>+</sup> exchanger 9)
Purification:	Immunoaffinity purified

## Target Details

Target:	SLC9A9
Alternative Name:	SLC9A9 / NHE9 ( <a href="#">SLC9A9 Products</a> )
Background:	Name/Gene ID: SLC9A9

## Target Details

---

Synonyms: SLC9A9, AUTS16, Na(+)/H(+) exchanger 9, NHE9, NHE-9, Sodium/hydrogen exchanger 9, Sodium/proton exchanger NHE9

Gene ID: 285195

UniProt: [Q8IVB4](#)

## Application Details

---

Application Notes: Approved: ELISA, WB (1 µg/mL)

Restrictions: For Research Use only

## Handling

---

Format: Liquid

Concentration: Lot specific

Buffer: PBS, 0.01 % sodium azide, 50 % glycerol.

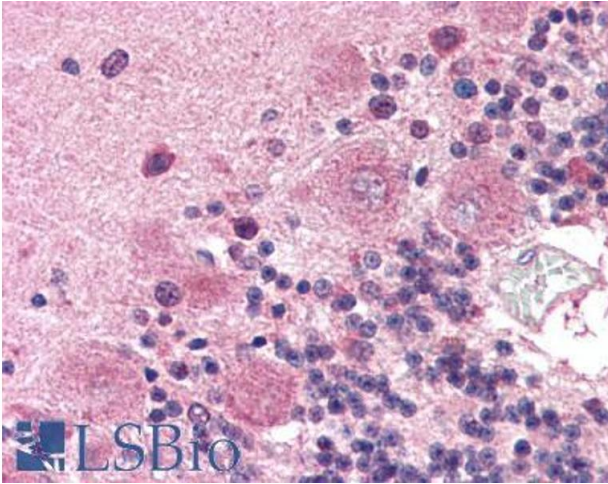
Preservative: Sodium azide

Precaution of Use: This product contains Sodium azide: a POISONOUS AND HAZARDOUS SUBSTANCE which should be handled by trained staff only.

Handling Advice: Avoid repeated freezing and thawing.

Storage: 4 °C, -20 °C

Storage Comment: +4°C or -20°C, Avoid repeated freezing and thawing.



**Image 1.**