

Datasheet for ABIN959649

anti-Anosmin antibody (Internal Region)

3 Images

[Go to Product page](#)

Overview

Quantity:	50 µg
Target:	Anosmin (ANOS1)
Binding Specificity:	Internal Region
Reactivity:	Human
Host:	Rabbit
Clonality:	Polyclonal
Conjugate:	This Anosmin antibody is un-conjugated
Application:	Western Blotting (WB), Immunohistochemistry (IHC), Immunohistochemistry (Paraffin-embedded Sections) (IHC (p))

Product Details

Brand:	IHC-plus™
Isotype:	IgG
Purification:	Immunoaffinity purified

Target Details

Target:	Anosmin (ANOS1)
Alternative Name:	ANOS1 / Anosmin (ANOS1 Products)
Background:	Name/Gene ID: ANOS1

Synonyms: ANOS1, ADMLX, Anosmin-1, HH1, KAL1, KAL, KALIG1, KMS, HHA, Kallmann

Target Details

syndrome 1 sequence, Kallmann syndrome protein, KALIG-1

Gene ID: 3730

UniProt: [P23352](#)

Application Details

Application Notes: Approved: IHC, IHC-P (5 µg/mL), WB (1 - 2 µg/mL)

Comment: Target Species of Antibody: Human

Restrictions: For Research Use only

Handling

Format: Liquid

Concentration: Lot specific

Buffer: PBS, 0.02 % sodium azide

Preservative: Sodium azide

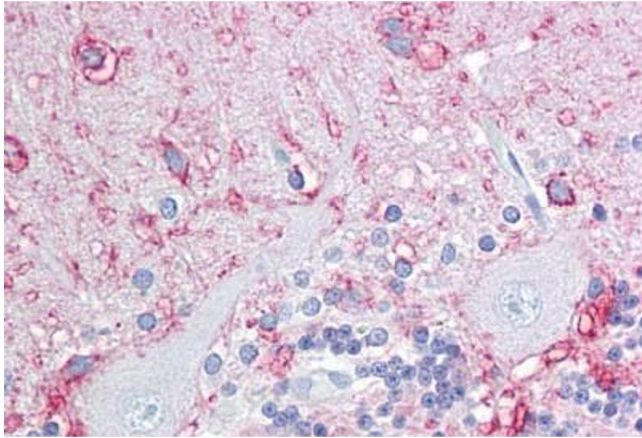
Precaution of Use: This product contains Sodium azide: a POISONOUS AND HAZARDOUS SUBSTANCE which should be handled by trained staff only.

Handling Advice: avoid freeze thaw cycles. Store undiluted.

Storage: 4 °C, -20 °C

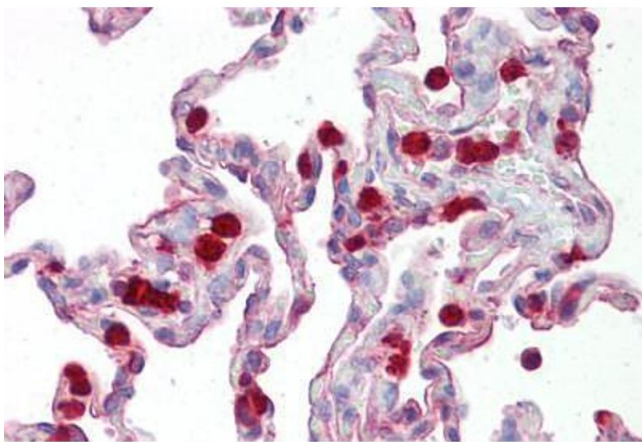
Storage Comment: Store at 4°C for 3 months and -20°C, stable for up to 1 year. Avoid repeated freeze-thaw cycles.

Expiry Date: 12 months



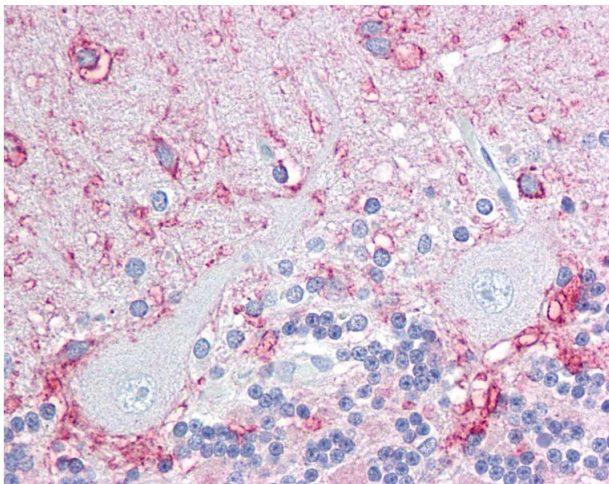
Immunohistochemistry

Image 1. Anti-KAL1 / Anosmin antibody IHC staining of human brain, cerebellum. Immunohistochemistry of formalin-fixed, paraffin-embedded tissue after heat-induced antigen retrieval. Antibody ABIN959649 concentration 5 ug/ml.



Immunohistochemistry

Image 2. Anti-KAL1 / Anosmin antibody IHC staining of human lung. Immunohistochemistry of formalin-fixed, paraffin-embedded tissue after heat-induced antigen retrieval. Antibody ABIN959649 concentration 5 ug/ml.



Immunohistochemistry

Image 3. Anti-KAL1 / Anosmin antibody IHC of human brain, cerebellum. Immunohistochemistry of formalin-fixed, paraffin-embedded tissue after heat-induced antigen retrieval. Antibody concentration 5 ug/ml.