



[Go to Product page](#)

Datasheet for ABIN959855

anti-PUMA antibody (AA 2-16)

2 Images

Overview

Quantity:	0.05 mg
Target:	PUMA (BBC3)
Binding Specificity:	AA 2-16
Reactivity:	Human, Rat, Mouse
Host:	Rabbit
Clonality:	Polyclonal
Conjugate:	This PUMA antibody is un-conjugated
Application:	Western Blotting (WB), Immunohistochemistry (IHC), Immunohistochemistry (Paraffin-embedded Sections) (IHC (p))

Product Details

Brand:	IHC-plus™
Immunogen:	Synthetic peptide ARARQEGSSPEPVEG corresponding to the N-terminus of human PUMA alpha. Percent identity by BLAST analysis: Human, Gibbon, Mouse, Rat, Porcine (100%), Opossum (87%). Type of Immunogen: Synthetic peptide
Isotype:	IgG
Specificity:	Recognizes the p53 - upregulated modulator of apoptosis, also known as Bcl-2 binding component 3, JFY-1 or Bcl-2. PUMA is a 193 amino acid ~20 kD pro-apoptotic member of the BCL-2 family. Bcl-2 binding component 3 is localized to the mitochondria, binds BCL-2 and

Product Details

induces cytochrome C release and apoptosis in response to p53. Four isoforms of PUMA have been described due to alternative splicing. Is expected to recognize the canonical isoform 1, also known as PUMA alpha, it is not expected to recognize any of the other isoforms of PUMA.

Predicted Reactivity: Percent identity by BLAST analysis: Human, Gibbon, Mouse, Rat, Porcine (100%) Opossum (87%).

Purification: Purified

Target Details

Target: PUMA (BBC3)

Alternative Name: PUMA ([BBC3 Products](#))

Background: Name/Gene ID: BBC3
Family: Apoptosis

Synonyms: BBC3, Bcl-2-binding component 3, BCL2 binding component 3, JFY-1, JFY1, PUMA

Gene ID: 27113

UniProt: [Q9BXH1](#)

Pathways: [p53 Signaling](#), [Positive Regulation of Endopeptidase Activity](#)

Application Details

Application Notes: Approved: IHC, IHC-P (2.5 µg/mL), WB (2 - 4 µg/mL)

Usage: Immunohistochemistry: This product requires antigen retrieval using heat treatment prior to staining of paraffin sections. Sodium citrate buffer pH 6.0 is recommended for this purpose. Histology Positive Control Tissue: Human breast carcinoma. Western Blot: detects a band of approximately 23kD in K562 cell lysates.

Comment: Target Species of Antibody: Human

Restrictions: For Research Use only

Handling

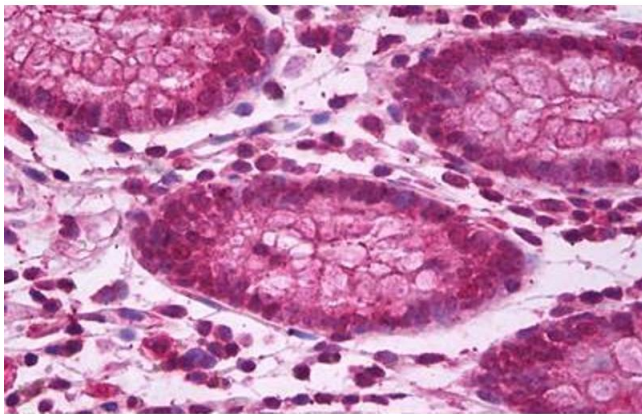
Format: Liquid

Concentration: Lot specific

Handling

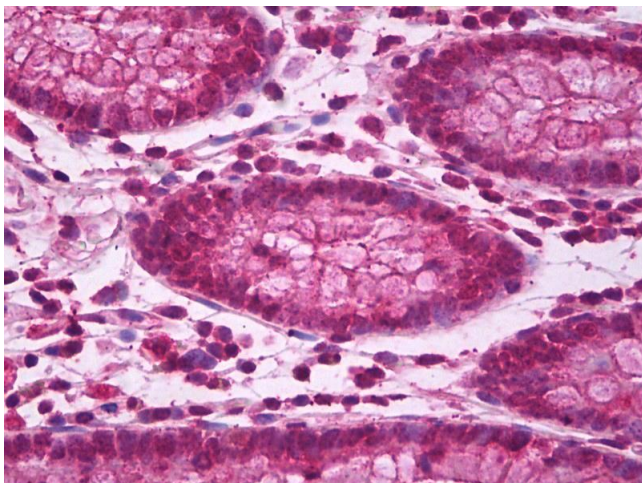
Buffer:	PBS, 0.02 % sodium azide.
Preservative:	Sodium azide
Precaution of Use:	This product contains Sodium azide: a POISONOUS AND HAZARDOUS SUBSTANCE which should be handled by trained staff only.
Handling Advice:	avoid freeze thaw cycles.
Storage:	4 °C,-20 °C
Storage Comment:	Short term 4°C, long term aliquot and store at -20°C, avoid freeze-thaw cycles.

Images



Immunohistochemistry

Image 1. Anti-BBC3 / PUMA antibody IHC staining of human colon. Immunohistochemistry of formalin-fixed, paraffin-embedded tissue after heat-induced antigen retrieval. Antibody ABIN959855 concentration 41396 ug/ml.



Immunohistochemistry

Image 2. Anti-BBC3 / PUMA antibody IHC of human colon. Immunohistochemistry of formalin-fixed, paraffin-embedded tissue after heat-induced antigen retrieval. Antibody concentration 2.5 ug/ml.