



[Go to Product page](#)

Datasheet for ABIN959862
anti-DIABLO antibody (AA 199-212)

1 Image

Overview

Quantity:	50 µg
Target:	DIABLO
Binding Specificity:	AA 199-212
Reactivity:	Human
Host:	Rabbit
Clonality:	Polyclonal
Application:	Western Blotting (WB), Immunohistochemistry (IHC), Immunohistochemistry (Paraffin-embedded Sections) (IHC (p))

Product Details

Brand:	IHC-plus™
Immunogen:	Synthetic peptide from human DIABLO / SMAC. Type of Immunogen: Synthetic peptide
Isotype:	IgG
Specificity:	Smac.
Purification:	Protein G purified

Target Details

Target:	DIABLO
Alternative Name:	DIABLO / SMAC (DIABLO Products)

Target Details

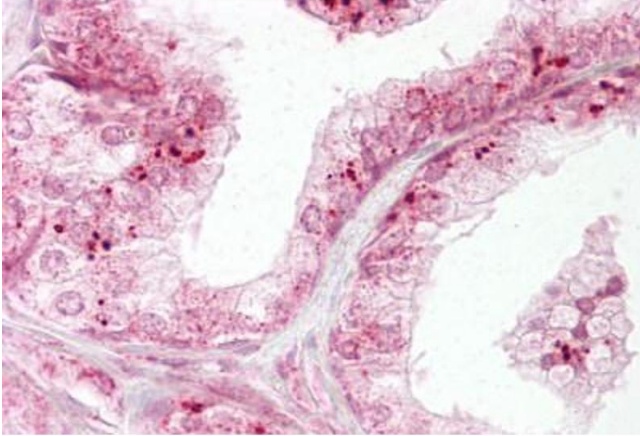
Background:	Name/Gene ID: DIABLO Family: Apoptosis Synonyms: DIABLO, DFNA64, DIABLO-S, Diablo homolog, mitochondrial, SMAC3, Mitochondrial Smac protein, SMAC
Gene ID:	56616
UniProt:	Q9NR28
Pathways:	Apoptosis , Caspase Cascade in Apoptosis , Positive Regulation of Endopeptidase Activity

Application Details

Application Notes:	Approved: IHC, IHC-P (10 µg/mL), WB (0.5 - 2 µg/mL)
Comment:	Target Species of Antibody: Human
Restrictions:	For Research Use only

Handling

Format:	Liquid
Concentration:	Lot specific
Buffer:	PBS, 0.02 % sodium azide.
Preservative:	Sodium azide
Precaution of Use:	This product contains Sodium azide: a POISONOUS AND HAZARDOUS SUBSTANCE which should be handled by trained staff only.
Handling Advice:	Avoid freeze-thaw cycles.
Storage:	4 °C,-20 °C
Storage Comment:	Short term: 4°C. Long term: Store at -20°C. Avoid freeze-thaw cycles.



Immunohistochemistry

Image 1. Anti-DIABLO / SMAC antibody IHC staining of human prostate. Immunohistochemistry of formalin-fixed, paraffin-embedded tissue after heat-induced antigen retrieval. Antibody ABIN959862 concentration 10 ug/ml.