

Datasheet for ABIN959905

**anti-TLR8 antibody (AA 750-850) (PE)**[Go to Product page](#)**2** Images

## Overview

Quantity:	0.1 mL
Target:	TLR8
Binding Specificity:	AA 750-850
Reactivity:	Human, Mouse
Host:	Mouse
Clonality:	Monoclonal
Conjugate:	This TLR8 antibody is conjugated to PE
Application:	Flow Cytometry (FACS)

## Product Details

Immunogen:	This antibody was developed against a KLH-conjugated synthetic peptide of human TLR8, within amino acids 750-850. It will cross-react with mouse TLR8.  Type of Immunogen: Synthetic peptide
Clone:	44C143
Isotype:	IgG1 kappa
Specificity:	Human TLR8.
Purification:	Protein G purified

## Target Details

Target:	TLR8
---------	------

## Target Details

Alternative Name:	TLR8 ( <a href="#">TLR8 Products</a> )
Background:	Name/Gene ID: TLR8 Family: Toll-like Receptor  Synonyms: TLR8, CD288, Toll-like receptor 8, CD288 antigen
Gene ID:	51311
UniProt:	<a href="#">Q9NR97</a>
Pathways:	<a href="#">TLR Signaling</a> , <a href="#">Activation of Innate immune Response</a> , <a href="#">Toll-Like Receptors Cascades</a>

## Application Details

Application Notes:	Approved: Flo (0.5 - 2 µg/10 x10 <sup>6</sup> )  Usage: Flow: Cell Surface, Intracellular. The applications listed have been tested for the unconjugated form of this product. Other forms have not been tested.
Comment:	Target Species of Antibody: Human
Restrictions:	For Research Use only

## Handling

Format:	Liquid
Concentration:	Lot specific
Buffer:	PBS, 0.05 % sodium azide.
Preservative:	Sodium azide
Precaution of Use:	This product contains Sodium azide: a POISONOUS AND HAZARDOUS SUBSTANCE which should be handled by trained staff only.
Handling Advice:	Do not freeze! Sensitive to light.
Storage:	4 °C
Storage Comment:	Maybe stored at 4°C before opening. DO NOT FREEZE! Stable at 4°C as an undiluted liquid. Dilute only prior to immediate use. Stable for at least 6 months at 4°C. Protect from light.

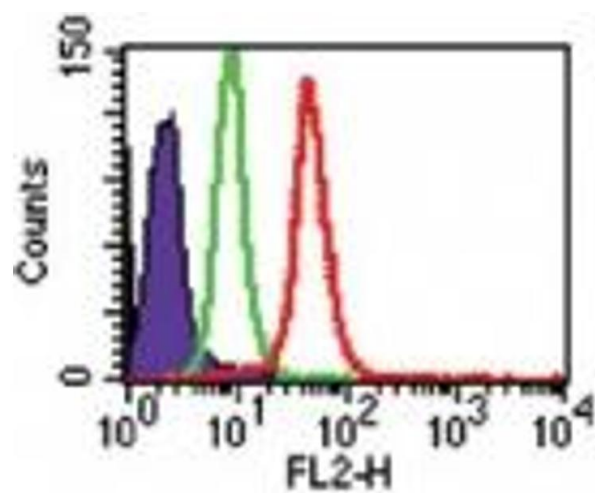


Image 1.

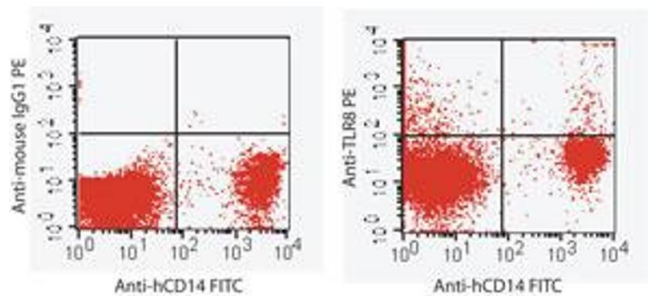


Image 2.