

Datasheet for ABIN959984

**anti-C-Type Lectin Domain Family 6, Member A (CLEC6A) (AA 75-125) antibody**[Go to Product page](#)**3** Images

## Overview

Quantity:	100 µg
Target:	C-Type Lectin Domain Family 6, Member A (CLEC6A)
Binding Specificity:	AA 75-125
Reactivity:	Human
Host:	Mouse
Clonality:	Monoclonal
Conjugate:	Un-conjugated
Application:	Western Blotting (WB), Immunohistochemistry (IHC), Flow Cytometry (FACS), Immunohistochemistry (Paraffin-embedded Sections) (IHC (p))

## Product Details

Immunogen:	A portion of amino acids 75-125 of human Dectin-2.  Type of Immunogen: Protein fragment
Clone:	IMG3D1
Isotype:	IgG3 kappa
Specificity:	Human CLEC6A / Dectin 2.
Purification:	Protein G purified

## Target Details

Target:	C-Type Lectin Domain Family 6, Member A (CLEC6A)
---------	--

## Target Details

Alternative Name:	CLEC6A / Dectin 2 ( <a href="#">CLEC6A Products</a> )
Background:	Name/Gene ID: CLEC6A  Synonyms: CLEC6A, CLEC4N, CLECSF10, Dectin-2, Dectin 2, DC-associated C-type lectin 2, DECTIN2
Gene ID:	93978
UniProt:	<a href="#">Q6EIG7</a>

## Application Details

Application Notes:	Approved: Flo, IHC, IHC-P (5 µg/mL), WB (2 - 5 µg/mL)  Usage: Flow: Cell Surface.
Comment:	Target Species of Antibody: Human
Restrictions:	For Research Use only

## Handling

Format:	Liquid
Concentration:	Lot specific
Buffer:	PBS, 0.05 % sodium azide.
Preservative:	Sodium azide
Precaution of Use:	This product contains Sodium azide: a POISONOUS AND HAZARDOUS SUBSTANCE which should be handled by trained staff only.
Storage:	4 °C,-20 °C
Storage Comment:	Store at 4°C for short term applications. For long term storage, aliquot and store at -20°C.

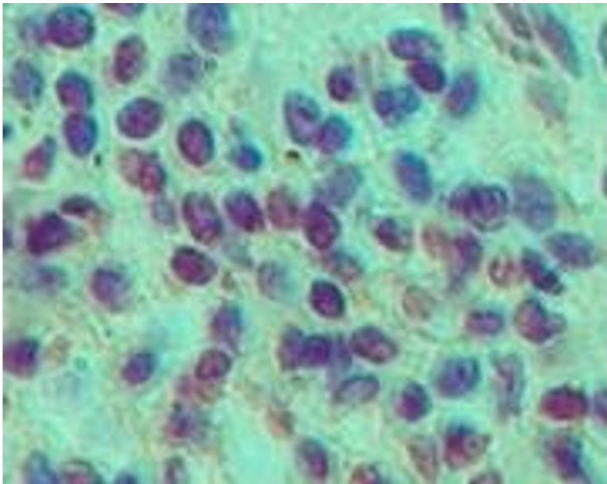


Image 1.

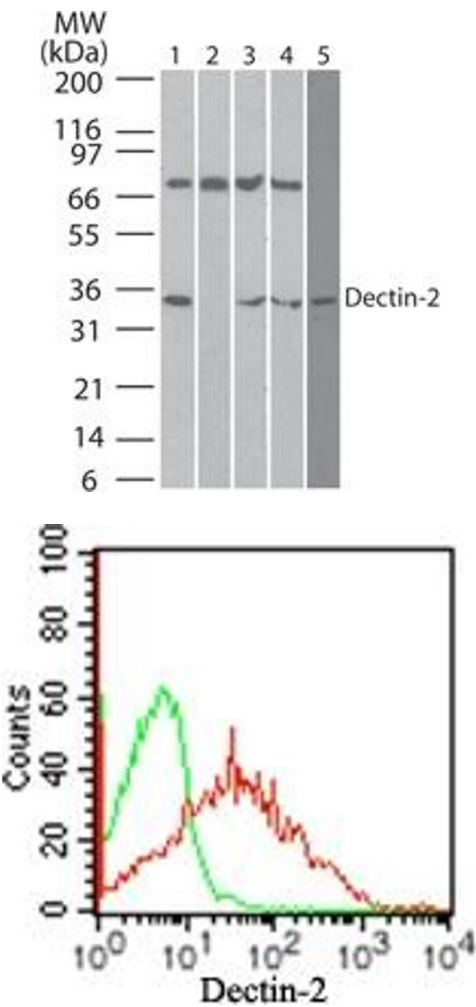


Image 2.

Image 3.