

Datasheet for ABIN959991

**anti-CCL20 antibody****1** Image[Go to Product page](#)

## Overview

Quantity:	100 µg
Target:	CCL20
Reactivity:	Mouse
Host:	Rat
Clonality:	Monoclonal
Conjugate:	This CCL20 antibody is un-conjugated
Application:	Western Blotting (WB)

## Product Details

Immunogen:	Full length recombinant mouse MIP-3 a. Type of Immunogen: Recombinant protein
Clone:	IMG4N5F7
Isotype:	IgG2a kappa
Specificity:	Mouse CCL20.
Purification:	Protein G purified

## Target Details

Target:	CCL20
Alternative Name:	CCL20 / MIP-3-Alpha ( <a href="#">CCL20 Products</a> )

## Target Details

---

Background:	Name/Gene ID: CCL20 Subfamily: Interchrine beta Family: Interchrine  Synonyms: CCL20, Beta chemokine exodus-1, Beta-chemokine exodus-1, CKb4, Exodus-1, MIP-3a, MIP-3-alpha, LARC, ST38, SCYA20, C-C motif chemokine 20, CC chemokine LARC, Mip-3alpha, MIP3A, Small-inducible cytokine A20
Gene ID:	6364
UniProt:	<a href="#">P78556</a>
Pathways:	<a href="#">The Global Phosphorylation Landscape of SARS-CoV-2 Infection</a>

## Application Details

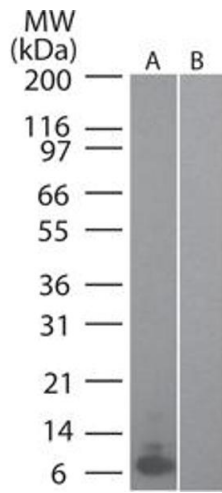
---

Application Notes:	Approved: WB (0.1 - 2 µg/mL)
Comment:	Target Species of Antibody: Mouse
Restrictions:	For Research Use only

## Handling

---

Format:	Liquid
Concentration:	Lot specific
Buffer:	PBS, 0.05 % BSA, 0.05 % sodium azide
Preservative:	Sodium azide
Precaution of Use:	This product contains Sodium azide: a POISONOUS AND HAZARDOUS SUBSTANCE which should be handled by trained staff only.
Storage:	4 °C,-20 °C
Storage Comment:	Store at 4°C for short term applications. For long term storage, aliquot and store at -20°C.



**Image 1.**