

Datasheet for ABIN960079
anti-APH1A antibody (AA 80-130)



[Go to Product page](#)

1 Image

Overview

| | |
|----------------------|---|
| Quantity: | 100 µg |
| Target: | APH1A |
| Binding Specificity: | AA 80-130 |
| Reactivity: | Human, Cow, Dog, Horse, Monkey, Opossum |
| Host: | Rabbit |
| Clonality: | Polyclonal |
| Conjugate: | This APH1A antibody is un-conjugated |
| Application: | Western Blotting (WB) |

Product Details

| | |
|---------------|--|
| Immunogen: | A portion of amino acids 80-130 of human APH1A. Type of Immunogen: Protein fragment |
| Specificity: | Human APH1A. |
| Purification: | Protein A purified |

Target Details

| | |
|-------------------|--|
| Target: | APH1A |
| Alternative Name: | APH1A / APH-1 (APH1A Products) |
| Background: | Name/Gene ID: APH1A Family: Protease Regulation |

Target Details

Synonyms: APH1A, Aph-1alpha, APH-1, CGI-78, PSF, APH-1A, Gamma-secretase subunit APH-1A

Gene ID: 51107

UniProt: [Q96B13](#)

Pathways: [Notch Signaling](#), [Neurotrophin Signaling Pathway](#)

Application Details

Application Notes: Approved: WB (4 - 6 µg/mL)

Comment: Target Species of Antibody: Human

Restrictions: For Research Use only

Handling

Format: Liquid

Concentration: Lot specific

Buffer: PBS, 0.05 % BSA, 0.05 % sodium azide

Preservative: Sodium azide

Precaution of Use: This product contains Sodium azide: a POISONOUS AND HAZARDOUS SUBSTANCE which should be handled by trained staff only.

Storage: 4 °C, -20 °C

Storage Comment: Store at 4°C for short term applications. For long term storage, aliquot and store at -20°C.

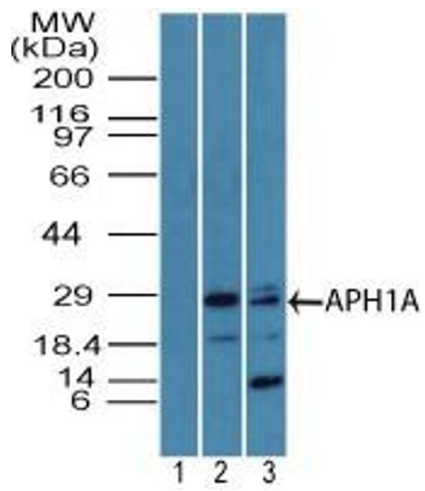


Image 1.