

Datasheet for ABIN960120  
**anti-CUEDC2 antibody (AA 250-300)**



[Go to Product page](#)

1 Image

### Overview

|                      |  |
|----------------------|--|
| Quantity:            | 100 µg                                     |
| Target:              | CUEDC2                                     |
| Binding Specificity: | AA 250-300                                 |
| Reactivity:          | Human, Mouse, Cow, Horse, Dog, Monkey, Pig |
| Host:                | Rabbit                                     |
| Clonality:           | Polyclonal                                 |
| Application:         | Western Blotting (WB)                      |

### Product Details

|               |  |
|---------------|--|
| Immunogen:    | Amino acids 250-300 of human CUEDC2.<br>Type of Immunogen: Synthetic peptide |
| Specificity:  | Human CUEDC2.  |
| Purification: | Protein A purified   |

### Target Details

|                   |  |
|-------------------|--|
| Target:           | CUEDC2   |
| Alternative Name: | CUEDC2 ( <a href="#">CUEDC2 Products</a> )   |
| Background:       | Name/Gene ID: CUEDC2<br>Synonyms: CUEDC2, BA18114.5, C10orf66, CUE domain containing 2 |

## Target Details

Gene ID: 79004

UniProt: [Q9H467](#)

## Application Details

Application Notes: Approved: WB (0.5 - 1 µg/mL)

Comment: Target Species of Antibody: Human

Restrictions: For Research Use only

## Handling

Format: Liquid

Concentration: Lot specific

Buffer: PBS, 0.05 % BSA, 0.05 % sodium azide

Preservative: Sodium azide

Precaution of Use: This product contains Sodium azide: a POISONOUS AND HAZARDOUS SUBSTANCE which should be handled by trained staff only.

Storage: 4 °C, -20 °C

Storage Comment: Store at 4°C for short term applications. For long term storage, aliquot and store at -20°C.

## Images

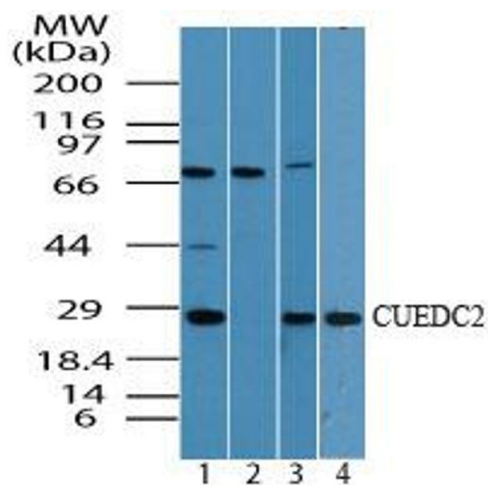


Image 1.