



[Go to Product page](#)

Datasheet for ABIN960185
anti-GFI1 antibody (AA 280-330)

1 Image

Overview

Quantity:	50 µg
Target:	GFI1
Binding Specificity:	AA 280-330
Reactivity:	Human, Rat, Mouse, Cow, Chicken
Host:	Rabbit
Clonality:	Polyclonal
Conjugate:	This GFI1 antibody is un-conjugated
Application:	Western Blotting (WB), Immunohistochemistry (IHC), Immunohistochemistry (Paraffin-embedded Sections) (IHC (p))

Product Details

Brand:	IHC-plus™
Immunogen:	Amino acids 280-330 of human Zinc finger protein Gfi-1. Type of Immunogen: Synthetic peptide
Specificity:	Human GFI1.
Purification:	Protein A purified

Target Details

Target:	GFI1
Alternative Name:	GFI1 (GFI1 Products)

Target Details

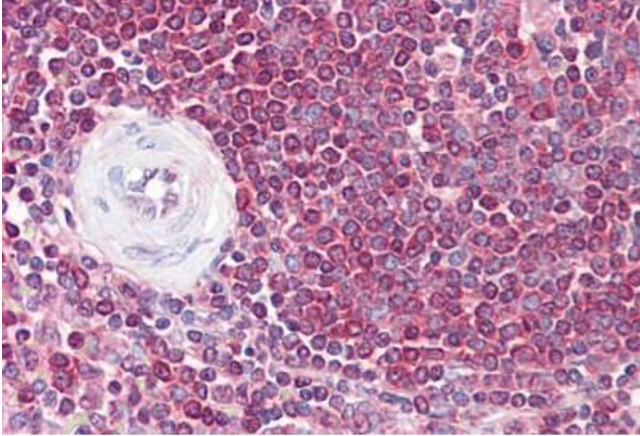
Background:	Name/Gene ID: GFI1 Synonyms: GFI1, Growth factor independence-1, GFI-1, GFI1A, SCN2, Zinc finger protein 163, Zinc finger protein Gfi-1, ZNF163, Growth factor independent 1
Gene ID:	2672
UniProt:	Q99684

Application Details

Application Notes:	Approved: IHC, IHC-P (5 - 10 µg/mL), WB (6 - 8 µg/mL)
Comment:	Target Species of Antibody: Human
Restrictions:	For Research Use only

Handling

Format:	Liquid
Concentration:	Lot specific
Buffer:	PBS, 0.05 % BSA, 0.05 % sodium azide
Preservative:	Sodium azide
Precaution of Use:	This product contains Sodium azide: a POISONOUS AND HAZARDOUS SUBSTANCE which should be handled by trained staff only.
Storage:	4 °C,-20 °C
Storage Comment:	Store at 4°C for short term applications. For long term storage, aliquot and store at -20°C.



Immunohistochemistry

Image 1. Anti-GFI1 antibody IHC staining of human spleen. Immunohistochemistry of formalin-fixed, paraffin-embedded tissue after heat-induced antigen retrieval. Antibody ABIN960185 concentration 5 ug/ml.