



[Go to Product page](#)

Datasheet for ABIN960191  
**anti-GPR183 antibody (AA 300-350)**

2 Images

### Overview

Quantity:	100 µg
Target:	GPR183
Binding Specificity:	AA 300-350
Reactivity:	Human
Host:	Rabbit
Clonality:	Polyclonal
Conjugate:	This GPR183 antibody is un-conjugated
Application:	Western Blotting (WB), Immunohistochemistry (IHC), Immunohistochemistry (Paraffin-embedded Sections) (IHC (p))

### Product Details

Immunogen:	A portion of amino acids 300-350 of human EBI2. Type of Immunogen: Protein fragment
Specificity:	Human GPR183 / EBI2.
Purification:	Protein A purified

### Target Details

Target:	GPR183
Alternative Name:	GPR183 / EBI2 ( <a href="#">GPR183 Products</a> )
Background:	Name/Gene ID: GPR183

## Target Details

---

Subfamily: Orphan-A

Family: GPCR

Synonyms: GPR183, EBI 2, EBI2, EBV-induced gene 2, G protein-coupled receptor 183, G-protein coupled receptor 183

---

Gene ID: 1880

---

UniProt: [P32249](#)

---

## Application Details

---

Application Notes: Approved: IHC, IHC-P (5 µg/mL), WB (2 - 4 µg/mL)

---

Comment: Target Species of Antibody: Human

---

Restrictions: For Research Use only

---

## Handling

---

Format: Liquid

---

Concentration: Lot specific

---

Buffer: PBS, 0.05 % BSA, 0.05 % sodium azide

---

Preservative: Sodium azide

---

Precaution of Use: This product contains Sodium azide: a POISONOUS AND HAZARDOUS SUBSTANCE which should be handled by trained staff only.

---

Storage: 4 °C, -20 °C

---

Storage Comment: Store at 4°C for short term applications. For long term storage, aliquot and store at -20°C.

---

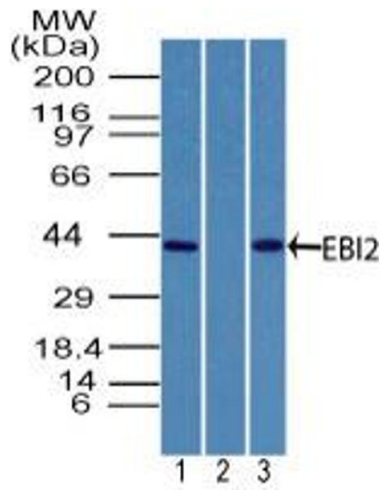


Image 1.

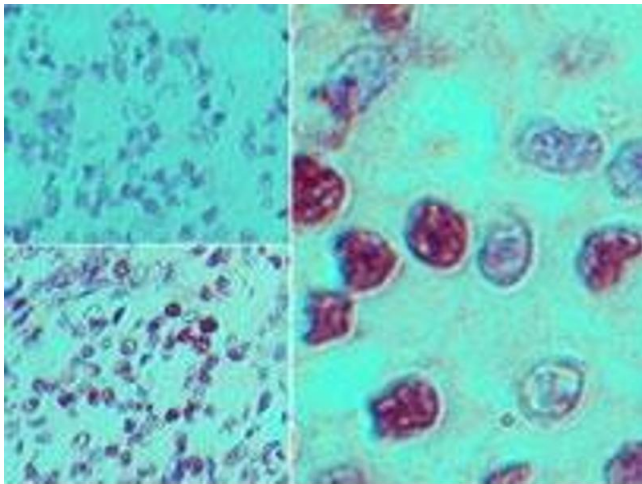


Image 2.