

Datasheet for ABIN960288
anti-NOTCH2 antibody (AA 1550-1600)



[Go to Product page](#)

1 Image

Overview

Quantity:	100 µg
Target:	NOTCH2
Binding Specificity:	AA 1550-1600
Reactivity:	Human
Host:	Rabbit
Clonality:	Polyclonal
Conjugate:	This NOTCH2 antibody is un-conjugated
Application:	Western Blotting (WB)

Product Details

Immunogen:	A portion of amino acids 1550-1600 of human NOTCH2. Type of Immunogen: Protein fragment
Specificity:	Human NOTCH2.
Purification:	Protein A purified

Target Details

Target:	NOTCH2
Alternative Name:	NOTCH2 / NOTCH-2 (NOTCH2 Products)
Background:	Name/Gene ID: NOTCH2

Target Details

Synonyms: NOTCH2, AGS2, HN2, Notch (Drosophila) homolog 2, Notch homolog 2 (Drosophila), Notch 2, Notch homolog 2, HJCYS

Gene ID: 4853

UniProt: [Q04721](#)

Pathways: [Notch Signaling](#), [Stem Cell Maintenance](#)

Application Details

Application Notes: Approved: WB (2 - 4 µg/mL)

Comment: Target Species of Antibody: Human

Restrictions: For Research Use only

Handling

Format: Liquid

Concentration: Lot specific

Buffer: PBS, 0.05 % BSA, 0.05 % sodium azide

Preservative: Sodium azide

Precaution of Use: This product contains Sodium azide: a POISONOUS AND HAZARDOUS SUBSTANCE which should be handled by trained staff only.

Storage: 4 °C, -20 °C

Storage Comment: Store at 4°C for short term applications. For long term storage, aliquot and store at -20°C.

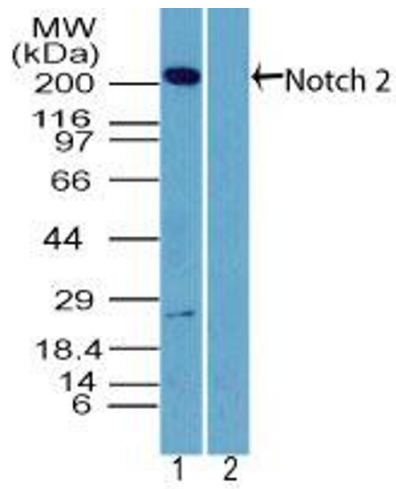


Image 1.