

Datasheet for ABIN960335
anti-S1PR1 antibody (AA 1-50)



[Go to Product page](#)

1 Image

Overview

Quantity:	100 µg
Target:	S1PR1
Binding Specificity:	AA 1-50
Reactivity:	Human
Host:	Rabbit
Clonality:	Polyclonal
Conjugate:	This S1PR1 antibody is un-conjugated
Application:	Immunohistochemistry (IHC), Immunohistochemistry (Paraffin-embedded Sections) (IHC (p))

Product Details

Immunogen:	A portion of amino acids 1-50 of human S1PR1. Type of Immunogen: Protein fragment
Specificity:	Human S1PR1 / EDG1.
Purification:	Protein A purified

Target Details

Target:	S1PR1
Alternative Name:	S1PR1 / EDG1 / S1P1 (S1PR1 Products)
Background:	Name/Gene ID: S1PR1 Subfamily: Lysophospholipid/Lysosphingolipid

Target Details

Family: GPCR

Synonyms: S1PR1, CD363, CD363 antigen, CHEDG1, ECGF1, EDG-1, D1S3362, EDG1, S1P1, S1P receptor Edg-1, S1P receptor 1

Gene ID: 1901

UniProt: [P21453](#)

Pathways: [Signaling Events mediated by VEGFR1 and VEGFR2](#)

Application Details

Application Notes: Approved: IHC, IHC-P (5 µg/mL)

Comment: Target Species of Antibody: Human

Restrictions: For Research Use only

Handling

Format: Liquid

Concentration: Lot specific

Buffer: PBS, 0.05 % BSA, 0.05 % sodium azide

Preservative: Sodium azide

Precaution of Use: This product contains Sodium azide: a POISONOUS AND HAZARDOUS SUBSTANCE which should be handled by trained staff only.

Storage: 4 °C,-20 °C

Storage Comment: Store at 4°C for short term applications. For long term storage, aliquot and store at -20°C.

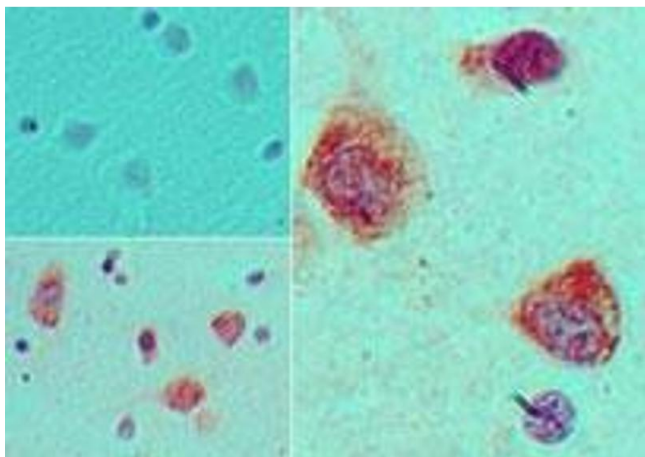


Image 1.