

Datasheet for ABIN96036

anti-CPB1 antibody

1 Image

[Go to Product page](#)

Overview

Quantity:	100 µg
Target:	CPB1
Reactivity:	Pig
Host:	Rabbit
Clonality:	Polyclonal
Conjugate:	This CPB1 antibody is un-conjugated
Application:	Western Blotting (WB), Immunohistochemistry (IHC), ELISA

Product Details

Immunogen:	Carboxypeptidase B [Porcine Pancreas] Immunogen Type: Native Protein
Isotype:	IgG
Cross-Reactivity (Details):	Cross reactivity against Carboxypeptidase B from other tissues and species may occur but have not been specifically determined.
Purity:	Anti-CARBOXYPEPTIDASE B is an IgG fraction antibody purified from monospecific antiserum by a multi-step process which includes delipidation, salt fractionation and ion exchange chromatography followed by extensive dialysis against the buffer stated above. Assay by immunoelectrophoresis resulted in a single precipitin arc against anti-Rabbit Serum as well as purified and partially purified Carboxypeptidase B [Porcine Pancreas].
Endotoxin Level:	Low Endotoxin : No

Target Details

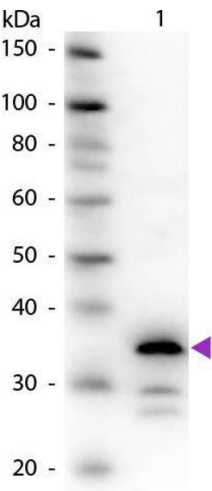
Target:	CPB1
Alternative Name:	Carboxypeptidase B (CPB1 Products)
Background:	Carboxypeptidase B is a carboxypeptidase that preferentially acts upon basic amino acids, such as arginine and lysine. This serum enzyme is also responsible for rapidly metabolizing the C5a protein into C5a des-Arg, with one less amino acid. Anti-CARBOXYPEPTIDASE B is ideal for investigators researching enzyme antibodies. Synonyms: CarboxypeptidaseB1 antibody, CP B1 antibody, CPB 1 antibody, CPB antibody, CPB1 antibody, DKFZp779K1333 antibody, Pancreas specific protein antibody, Pancreatic carboxypeptidase B1 antibody
Gene ID:	397341
UniProt:	P09955

Application Details

Application Notes:	Anti-Carboxypeptidase B antibody is suitable for ELISA, Western Blot and Immunohistochemistry applications. Specific conditions for reactivity should be optimized by the end user. ELISA Dilution: 1:20.000 - 1:100.000 Immunohistochemistry Dilution: 1:1.000 - 1:5.000 Western Blot Dilution: 1:2.000 - 1:10.000
Restrictions:	For Research Use only

Handling

Format:	Liquid
Buffer:	0.02 M Potassium Phosphate, 0.15 M Sodium Chloride, pH 7.2
Handling Advice:	Store the vial at -20°C or below after dilution. Avoid cycles of freezing and thawing.
Storage:	-20 °C
Storage Comment:	Store vial at -20 °C or below prior to opening. This vial contains a relatively low volume of reagent (25 µL). To minimize loss of volume dilute 1:10 by adding 225 µL of the buffer stated above directly to the vial. Recap, mix thoroughly and briefly centrifuge to collect the volume at the bottom of the vial. Use this intermediate dilution when calculating final dilutions as recommended below.
Expiry Date:	Expiration date is one (1) year from date of opening.



Western Blotting

Image 1. Western Blot of Rabbit Anti-Carboxypeptidase B antibody. Lane 1: Carboxypeptidase B. Lane 2: None. Load: 50 ng per lane. Primary antibody: Carboxypeptidase B primary antibody at 1:1,000 overnight at 4°C. Secondary antibody: Peroxidase rabbit secondary antibody at 1:40,000 for 30 min at RT. Blocking: ABIN925618 for 30 min at RT. Predicted/Observed size: 35 kDa, 35 kDa for Carboxypeptidase B. Other band(s): Carboxypeptidase B splice variants and isoforms.