



## Datasheet for ABIN96037 anti-CPA antibody



[Go to Product page](#)

### 1 Image

#### Overview

Quantity:	100 µg
Target:	CPA
Reactivity:	Cow
Host:	Rabbit
Clonality:	Polyclonal
Conjugate:	This CPA antibody is un-conjugated
Application:	Western Blotting (WB), ELISA, Immunohistochemistry (IHC)

#### Product Details

Immunogen:	Carboxypeptidase A [Bovine Pancreas] Immunogen Type: Native Protein
Isotype:	IgG
Cross-Reactivity (Details):	Cross reactivity against Carboxypeptidase A from other tissues and species may occur but have not been specifically determined.
Purity:	Anti-CARBOXYPEPTIDASE A is an IgG fraction antibody purified from monospecific antiserum by a multi-step process which includes delipidation, salt fractionation and ion exchange chromatography followed by extensive dialysis against the buffer stated above. Assay by immunoelectrophoresis resulted in a single precipitin arc against anti-Rabbit Serum as well as purified and partially purified Carboxypeptidase A [Bovine Pancreas].
Endotoxin Level:	Low Endotoxin : No

## Target Details

---

Target:	CPA
Alternative Name:	Carboxypeptidase A ( <a href="#">CPA Products</a> )
Background:	Synonyms: Carboxypeptidase A1 precursor antibody, CPA1 antibody, Pancreatic carboxypeptidase A1 antibody, Procarboxypeptidase A1 pancreatic antibody
Gene ID:	286762
UniProt:	<a href="#">P00730</a>

## Application Details

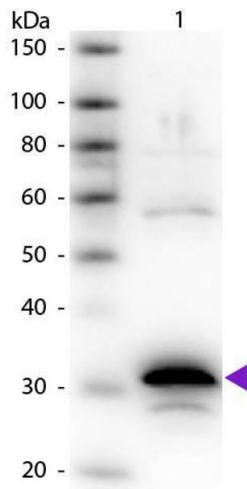
---

Application Notes:	ELISA Dilution: 1:250.000 Western Blot Dilution: 1:500 - 1:3.000
Restrictions:	For Research Use only

## Handling

---

Format:	Liquid
Buffer:	0.02 M Potassium Phosphate, 0.15 M Sodium Chloride, pH 7.2
Handling Advice:	Store the vial at -20°C or below after dilution. Avoid cycles of freezing and thawing.
Storage:	-20 °C
Storage Comment:	Store vial at -20 °C or below prior to opening. This vial contains a relatively low volume of reagent (25 µL). To minimize loss of volume dilute 1:10 by adding 225 µL of the buffer stated above directly to the vial. Recap, mix thoroughly and briefly centrifuge to collect the volume at the bottom of the vial. Use this intermediate dilution when calculating final dilutions as recommended below.
Expiry Date:	Expiration date is one (1) year from date of opening.



### Western Blotting

**Image 1.** Western Blot of Rabbit Anti-Carboxypeptidase A primary antibody. Lane 1: Carboxypeptidase A. Lane 2: None. Load: 50 ng per lane. Primary antibody: Carboxypeptidase A primary antibody at 1:1,000 overnight at 4°C. Secondary antibody: Peroxidase rabbit secondary antibody at 1:40,000 for 30 min at RT. Blocking: ABIN925618 for 30 min at RT. Predicted/Observed size: 34 kDa, 34 kDa for Carboxypeptidase A. Other band(s): Carboxypeptidase A splice variants and isoforms.