

Datasheet for ABIN960435

anti-TLR6 antibody (AA 408-424) (PE)[Go to Product page](#)**2** Images

Overview

Quantity:	0.1 mL
Target:	TLR6
Binding Specificity:	AA 408-424
Reactivity:	Human
Host:	Mouse
Clonality:	Monoclonal
Conjugate:	This TLR6 antibody is conjugated to PE
Application:	Flow Cytometry (FACS)

Product Details

Immunogen:	This antibody was developed against a synthetic peptide corresponding to amino acids 408-424 of human TLR6. Type of Immunogen: Synthetic peptide
Clone:	86B1153-2
Isotype:	IgG1
Specificity:	TLR6 (86B1153.2).
Purification:	Protein G purified

Target Details

Target:	TLR6
---------	------

Target Details

Alternative Name:	TLR6 (TLR6 Products)
Background:	Name/Gene ID: TLR6 Family: Toll-like Receptor Synonyms: TLR6, CD286 antigen, CD286, Toll-like receptor 6
Gene ID:	10333
UniProt:	Q9Y2C9
Pathways:	TLR Signaling , Activation of Innate immune Response , Cellular Response to Molecule of Bacterial Origin , Toll-Like Receptors Cascades

Application Details

Application Notes:	Approved: Flo (0.5 - 1 µg/10 x10 ⁶) Usage: Flow: Cell Surface, Intracellular. The applications listed have been tested for the unconjugated form of this product. Other forms have not been tested.
Comment:	Target Species of Antibody: Human
Restrictions:	For Research Use only

Handling

Format:	Liquid
Concentration:	Lot specific
Buffer:	PBS, 0.05 % sodium azide
Preservative:	Sodium azide
Precaution of Use:	This product contains Sodium azide: a POISONOUS AND HAZARDOUS SUBSTANCE which should be handled by trained staff only.
Handling Advice:	Do not freeze! Sensitive to light.
Storage:	4 °C
Storage Comment:	Maybe stored at 4°C before opening. DO NOT FREEZE! Stable at 4°C as an undiluted liquid. Dilute only prior to immediate use. Stable for at least 6 months at 4°C. Protect from light.

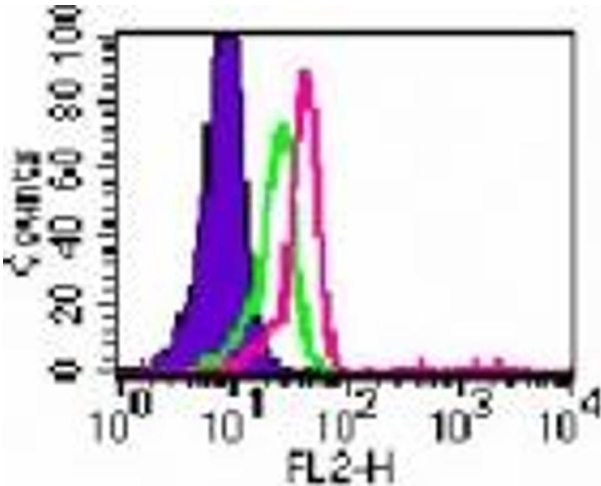


Image 1.

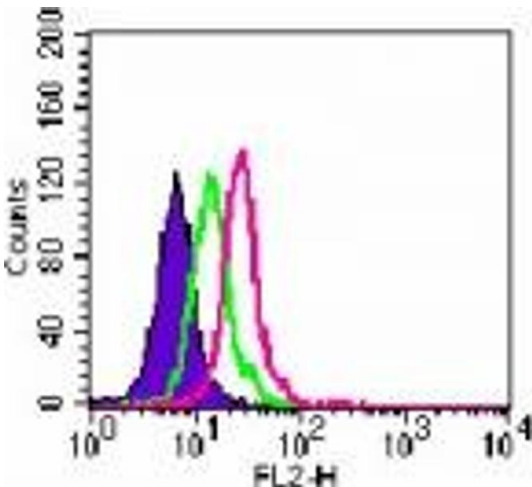


Image 2.