



[Go to Product page](#)

Datasheet for ABIN960520
anti-PTRF antibody (AA 1-30)

2 Images

Overview

Quantity:	200 µL
Target:	PTRF
Binding Specificity:	AA 1-30
Reactivity:	Human
Host:	Rabbit
Clonality:	Polyclonal
Conjugate:	This PTRF antibody is un-conjugated
Application:	Western Blotting (WB), Immunohistochemistry (IHC), Immunohistochemistry (Paraffin-embedded Sections) (IHC (p))

Product Details

Brand:	IHC-plus™
Specificity:	This PTRF antibody is generated from rabbits immunized with a KLH conjugated synthetic peptide between 1-30 amino acids from the N-terminal region of human PTRF.
Purification:	Ammonium sulfate precipitation

Target Details

Target:	PTRF
Alternative Name:	PTRF / CAVIN (PTRF Products)
Background:	Name/Gene ID: PTRF

Target Details

Synonyms: PTRF, Cavin-1, CAVIN1, CAVIN, CGL4, FKSG13, TTF-I interacting peptide 12

Gene ID: 284119

UniProt: [Q6NZI2](#)

Application Details

Application Notes: Approved: IHC, IHC-P (5 µg/mL), WB (1:1000)

Comment: Target Species of Antibody: Human

Restrictions: For Research Use only

Handling

Format: Liquid

Concentration: Lot specific

Buffer: PBS, 0.09 % sodium azide

Preservative: Sodium azide

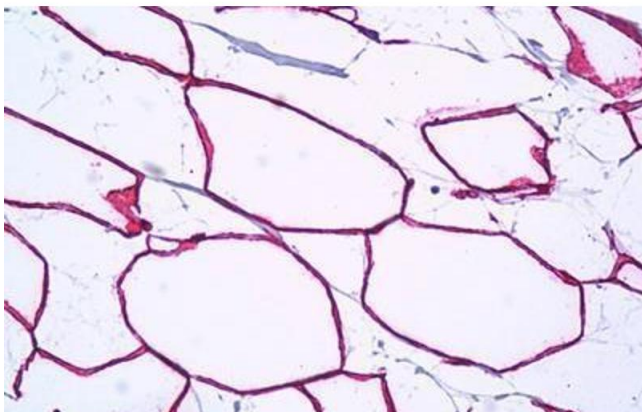
Precaution of Use: This product contains Sodium azide: a POISONOUS AND HAZARDOUS SUBSTANCE which should be handled by trained staff only.

Storage: 4 °C, -20 °C

Storage Comment: Maintain refrigerated at 2-8°C for up to 6 months. For long term storage store at -20°C.

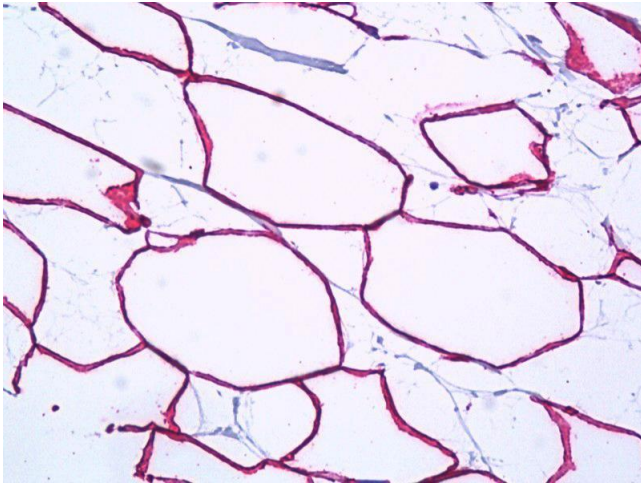
Expiry Date: 6 months

Images



Immunohistochemistry

Image 1. Anti-PTRF antibody IHC staining of human breast, adipocytes. Immunohistochemistry of formalin-fixed, paraffin-embedded tissue after heat-induced antigen retrieval. Antibody ABIN960520 concentration 5 µg/ml.



Immunohistochemistry

Image 2. Anti-PTRF antibody IHC of human breast, adipocytes. Immunohistochemistry of formalin-fixed, paraffin-embedded tissue after heat-induced antigen retrieval. Antibody concentration 5 ug/ml.