



[Go to Product page](#)

Datasheet for ABIN960540
anti-CD45RB antibody

2 Images

Overview

| | |
|--------------|--|
| Quantity: | 0.1 mg |
| Target: | CD45RB |
| Reactivity: | Human, Monkey, Rhesus Monkey, Rabbit |
| Host: | Mouse |
| Clonality: | Monoclonal |
| Conjugate: | This CD45RB antibody is un-conjugated |
| Application: | Flow Cytometry (FACS), Immunohistochemistry (IHC), Immunohistochemistry (Paraffin-embedded Sections) (IHC (p)), Immunoprecipitation (IP), Immunohistochemistry (Frozen Sections) (IHC (fro)) |

Product Details

| | |
|----------------------|---|
| Brand: | IHC-plus™ |
| Immunogen: | Human lymphocytes Type of Immunogen: Cells |
| Clone: | MEM55 |
| Isotype: | IgG1 |
| Specificity: | Recognizes the isoform of the leucocyte common antigen encoded by exon B and stains B cells, most T cells and monocytes. Immunoprecipitates bands of 190, 200 and 205 kD. |
| No Cross-Reactivity: | Llama, Goat |
| Purification: | Protein A purified |

Target Details

Target: CD45RB

Alternative Name: CD45RB ([CD45RB Products](#))

Application Details

Application Notes: Approved: Flo (1:50 - 1:100), IHC, IHC-Fr, IHC-P (10 µg/mL), IP

Usage: Flow Cytometry: Use 10 µL of the suggested working dilution to label 10⁶ cells in 100 µL.

Comment: Target Species of Antibody: Human

Restrictions: For Research Use only

Handling

Format: Liquid

Concentration: Lot specific

Buffer: PBS, 0.09 % sodium azide. Sourced in Ascites.

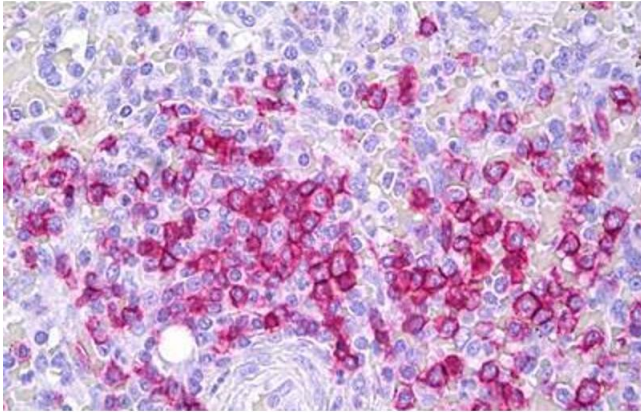
Preservative: Sodium azide

Precaution of Use: This product contains Sodium azide: a POISONOUS AND HAZARDOUS SUBSTANCE which should be handled by trained staff only.

Handling Advice: avoid freeze thaw cycles.

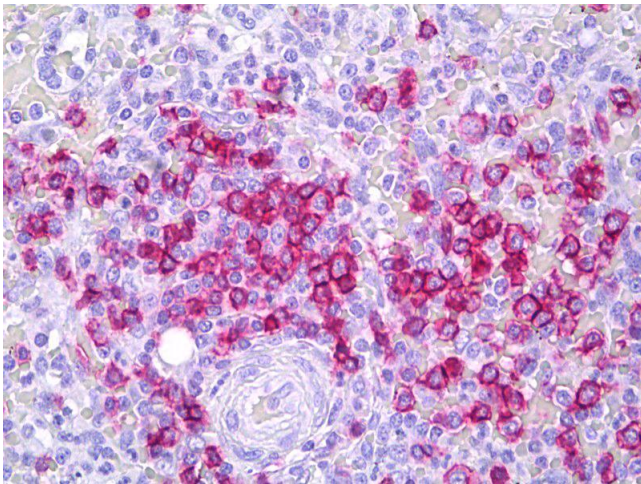
Storage: 4 °C, -20 °C

Storage Comment: Short term 4°C, long term aliquot and store at -20°C, avoid freeze-thaw cycles.



Immunohistochemistry

Image 1. Anti-CD45RB antibody IHC staining of human spleen, lymphocytes. Immunohistochemistry of formalin-fixed, paraffin-embedded tissue after heat-induced antigen retrieval. Antibody ABIN960540 concentration 10 ug/ml.



Immunohistochemistry

Image 2. Anti-CD45RB antibody IHC of human spleen, lymphocytes. Immunohistochemistry of formalin-fixed, paraffin-embedded tissue after heat-induced antigen retrieval. Antibody concentration 10 ug/ml. This image was taken for the unconjugated form of this pro ...