

Datasheet for ABIN960542
anti-alpha Tubulin antibody (Subunit alpha)



[Go to Product page](#)

4 Images

Overview

Quantity:	0.125 mg
Target:	alpha Tubulin (TUBA1)
Binding Specificity:	Subunit alpha
Reactivity:	Human, Saccharomyces cerevisiae, Mammalian, Avian, Drosophila melanogaster, Fungus
Host:	Rat
Clonality:	Monoclonal
Conjugate:	This alpha Tubulin antibody is un-conjugated
Application:	Western Blotting (WB), ELISA, Immunohistochemistry (IHC), Immunohistochemistry (Paraffin-embedded Sections) (IHC (p)), Immunohistochemistry (Frozen Sections) (IHC (fro)), Radioimmunoassay (RIA)

Product Details

Brand:	IHC-plus™
Immunogen:	Yeast tubulin. Type of Immunogen: Purified protein
Clone:	YOL1-34
Isotype:	IgG2a
Specificity:	Recognizes the alpha subunit of tubulin. This product is routinely tested in ELISA on Tubulin.
Purification:	Affinity purified

Target Details

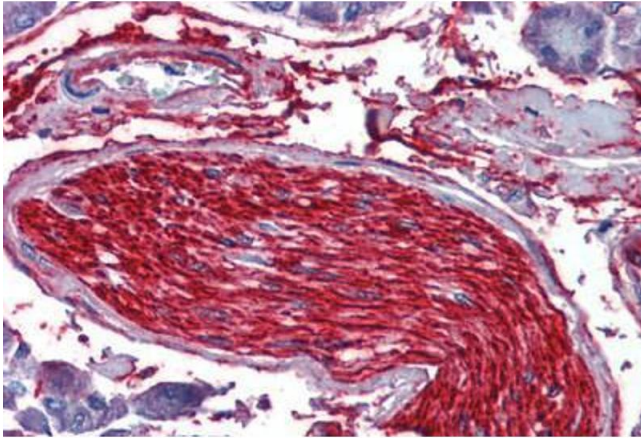
Target:	alpha Tubulin (TUBA1)
Alternative Name:	Alpha Tubulin (TUBA1 Products)
Pathways:	Microtubule Dynamics

Application Details

Application Notes:	Approved: ELISA (10 µg/mL), IHC, IHC-Fr, IHC-P (10 µg/mL), RIA, WB Usage: Immunohistochemistry: This antibody was validated for use in immunohistochemistry on a panel of 21 formalin-fixed, paraffin-embedded (FFPE) human tissues after heat induced antigen retrieval in pH 6.0 citrate buffer. After incubation with the primary antibody, slides were incubated with biotinylated secondary antibody, followed by alkaline phosphatase-streptavidin and chromogen. The stained slides were evaluated by a pathologist to confirm staining specificity. The optimal working concentration for this antibody was determined to be 10 µg/mL.
Comment:	Target Species of Antibody: Yeast
Restrictions:	For Research Use only

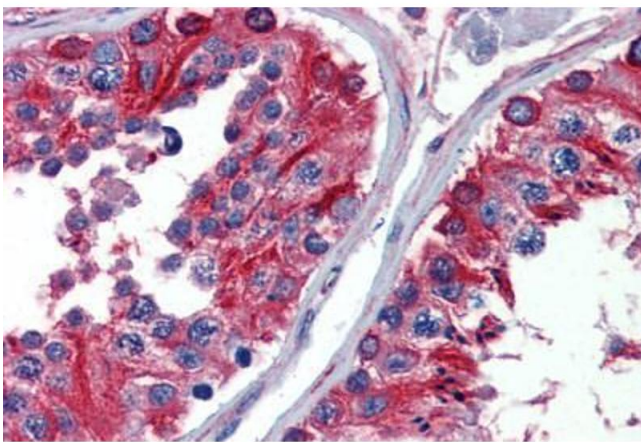
Handling

Format:	Liquid
Concentration:	Lot specific
Buffer:	PBS, 0.09 % sodium azide.
Preservative:	Sodium azide
Precaution of Use:	This product contains Sodium azide: a POISONOUS AND HAZARDOUS SUBSTANCE which should be handled by trained staff only.
Handling Advice:	Avoid repeat freeze-thaw cycles.
Storage:	4 °C,-20 °C
Storage Comment:	Short term: 4°C. Long term: Store at -20°C. Avoid freeze-thaw cycles.



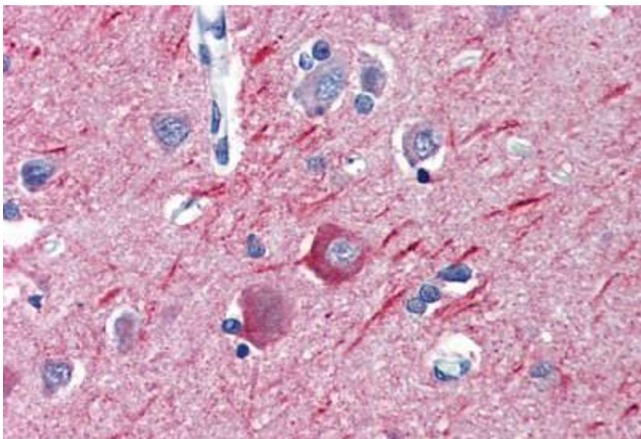
Immunohistochemistry

Image 1. Anti-Alpha Tubulin antibody IHC staining of human nerve. Immunohistochemistry of formalin-fixed, paraffin-embedded tissue after heat-induced antigen retrieval. Antibody ABIN960542 concentration 10 ug/ml.



Immunohistochemistry

Image 2. Anti-Alpha Tubulin antibody IHC staining of human testis. Immunohistochemistry of formalin-fixed, paraffin-embedded tissue after heat-induced antigen retrieval. Antibody ABIN960542 concentration 10 ug/ml.



Immunohistochemistry

Image 3. Anti-Alpha Tubulin antibody IHC staining of human brain, cortex. Immunohistochemistry of formalin-fixed, paraffin-embedded tissue after heat-induced antigen retrieval. Antibody ABIN960542 concentration 10 ug/ml.

Please check the [product details page](#) for more images. Overall 4 images are available for ABIN960542.