

Datasheet for ABIN960545

anti-EOMES antibody**2** Images[Go to Product page](#)

Overview

| | |
|--------------|----------------------------------------------------------------------------------------------------------------|
| Quantity: | 50 µg |
| Target: | EOMES |
| Reactivity: | Human, Mouse |
| Host: | Chicken |
| Clonality: | Polyclonal |
| Conjugate: | This EOMES antibody is un-conjugated |
| Application: | Western Blotting (WB), Immunohistochemistry (IHC), Immunohistochemistry (Paraffin-embedded Sections) (IHC (p)) |

Product Details

| | |
|---------------|--------------------------------------------------------------|
| Brand: | IHC-plus™ |
| Immunogen: | Linear peptide corresponding to mouse Tbr2 (KLH). |
| Specificity: | Recognizes mouse Tbr2. Species cross-reactivity: mouse, rat. |
| Purification: | Immunoaffinity purified |

Target Details

| | |
|-------------------|---------------------------------------------------------|
| Target: | EOMES |
| Alternative Name: | Eomesodermin / EOMES (EOMES Products) |
| Background: | Name/Gene ID: EOMES |

Synonyms: EOMES, Eomesodermin, Eomesodermin homolog, T box, brain, 2, T-box brain

Target Details

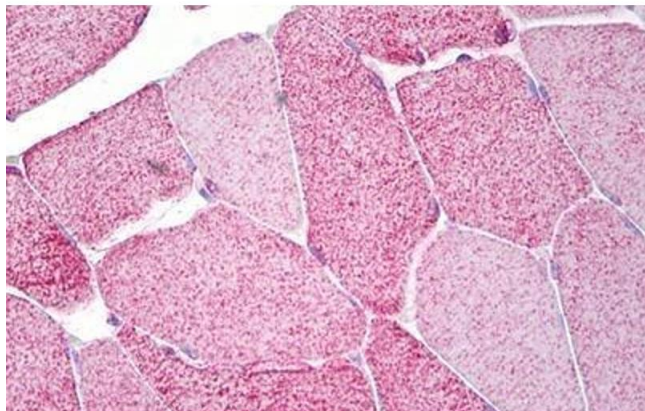
| | |
|-----------|-------------------------------------------------|
| | protein 2, T-box brain2, T-brain-2, TBR-2, TBR2 |
| Gene ID: | 8320 |
| UniProt: | O95936 |
| Pathways: | Stem Cell Maintenance |

Application Details

| | |
|--------------------|-----------------------------------------------------------------------------------------------------------------------------------------------------------------------------------------------------------------------------|
| Application Notes: | Approved: IHC, IHC-P (10 µg/mL), WB (0.5 µg/mL) Usage: Suitable for use in Western Blot and Immunohistochemistry. L. Western Blot: 0.5 µg/mL. Immunohistochemistry: 1:100. Does not work for IHC with mouse samples. |
| Comment: | Target Species of Antibody: Human |
| Restrictions: | For Research Use only |

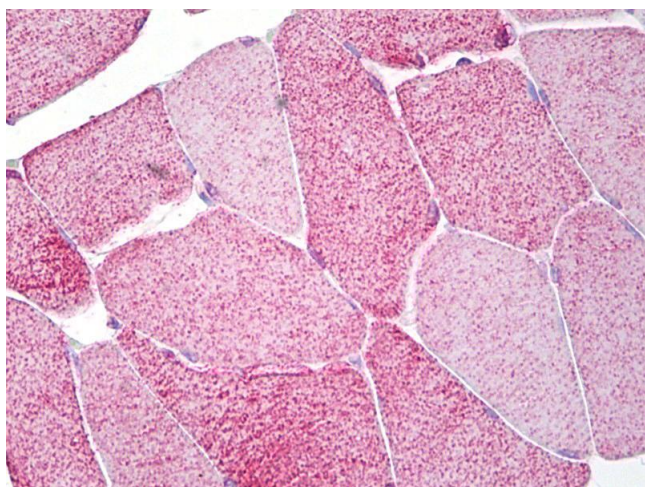
Handling

| | |
|--------------------|-----------------------------------------------------------------------------------------------------------------------------------------|
| Format: | Liquid |
| Concentration: | Lot specific |
| Buffer: | PBS, 0.1 M Tris-glycine, pH 7.4, 150 mM sodium chloride, 0.05 % sodium azide |
| Preservative: | Sodium azide |
| Precaution of Use: | This product contains Sodium azide: a POISONOUS AND HAZARDOUS SUBSTANCE which should be handled by trained staff only. |
| Handling Advice: | Aliquot to Avoid repeated freezing and thawing. |
| Storage: | 4 °C, -20 °C |
| Storage Comment: | May be stored at 4°C for short-term only. Aliquot to avoid freeze-thaw cycles. Store at -20°C. Aliquots are stable for at least 1 year. |



Immunohistochemistry

Image 1. Anti-EOMES antibody IHC staining of human skeletal muscle. Immunohistochemistry of formalin-fixed, paraffin-embedded tissue after heat-induced antigen retrieval. Antibody ABIN960545 concentration 10 ug/ml.



Immunohistochemistry

Image 2. Anti-EOMES antibody IHC of human skeletal muscle. Immunohistochemistry of formalin-fixed, paraffin-embedded tissue after heat-induced antigen retrieval. Antibody concentration 10 ug/ml.