

Datasheet for ABIN960546
anti-SLC1A2 antibody (C-Term)

2 Images

[Go to Product page](#)

Overview

Quantity:	50 µg
Target:	SLC1A2
Binding Specificity:	C-Term
Reactivity:	Human, Mouse
Host:	Mouse
Clonality:	Monoclonal
Conjugate:	This SLC1A2 antibody is un-conjugated
Application:	Western Blotting (WB), Immunohistochemistry (IHC), Immunocytochemistry (ICC), Immunohistochemistry (Paraffin-embedded Sections) (IHC (p))

Product Details

Brand:	IHC-plus™
Immunogen:	Linear peptide corresponding to the C-terminus of human Excitatory amino acid transporter 2.
Isotype:	IgG1 kappa
Specificity:	Recognizes human Excitatory amino acid transporter 2. Species cross-reactivity: mouse. Species sequence homology: rat.
Purification:	Affinity purified

Target Details

Target:	SLC1A2
---------	--------

Target Details

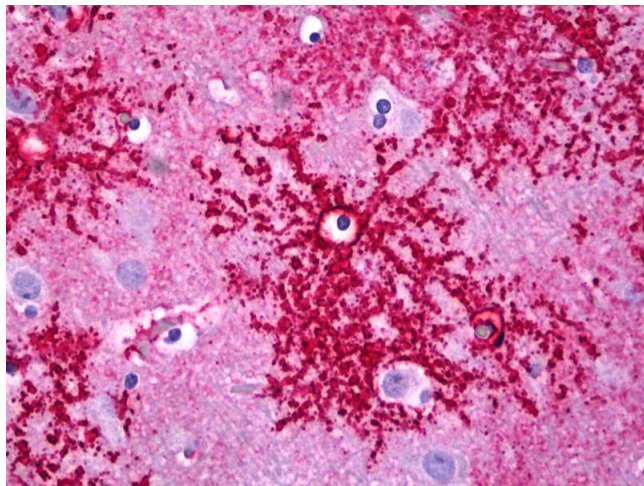
Alternative Name:	SLC1A2 / EAAT2 / GLT-1 (SLC1A2 Products)
Background:	Name/Gene ID: SLC1A2 Subfamily: Sodium:dicarboxylate symporter Family: Transporter Synonyms: SLC1A2, EAAT-2, GLT-1, Glutamate transporter 1, EAAT2, GLT1
Gene ID:	6506
UniProt:	P43004
Pathways:	Dicarboxylic Acid Transport

Application Details

Application Notes:	Approved: ICC, IHC, IHC-P (10 µg/mL), WB (0.5 µg/mL) Usage: Suitable for use in Western Blot, Immunohistochemistry, Immunocytochemistry. Western Blot: 0.5 µg/mL.
Comment:	Target Species of Antibody: Human
Restrictions:	For Research Use only

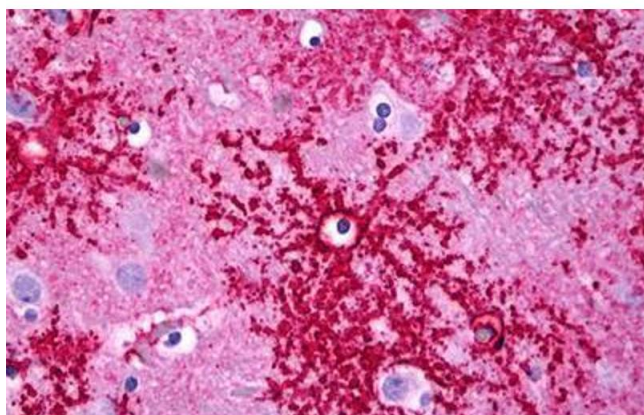
Handling

Format:	Liquid
Concentration:	Lot specific
Buffer:	0.1 M Tris-glycine, pH 7.4, 150 mM sodium chloride, 0.05 % sodium azide
Preservative:	Sodium azide
Precaution of Use:	This product contains Sodium azide: a POISONOUS AND HAZARDOUS SUBSTANCE which should be handled by trained staff only.
Handling Advice:	Aliquot to Avoid repeated freezing and thawing.
Storage:	4 °C, -20 °C
Storage Comment:	May be stored at 4°C for short-term only. Aliquot to avoid freeze-thaw cycles. Store at -20°C. Aliquots are stable for at least 1 year.



Immunohistochemistry

Image 1. Anti-SLC1A2 / EAAT2 antibody IHC of human brain, astrocytes. Immunohistochemistry of formalin-fixed, paraffin-embedded tissue after heat-induced antigen retrieval. Antibody concentration 10 ug/ml.



Immunohistochemistry

Image 2. Anti-SLC1A2 / EAAT2 antibody IHC staining of human brain, astrocytes. Immunohistochemistry of formalin-fixed, paraffin-embedded tissue after heat-induced antigen retrieval. Antibody ABIN960546 concentration 10 ug/ml.