

Datasheet for ABIN960745

## anti-C14orf1 antibody (Internal Region)

### 2 Images



[Go to Product page](#)

### Overview

Quantity:	50 µg
Target:	C14orf1
Binding Specificity:	Internal Region
Reactivity:	Human, Mouse, Monkey, Rabbit, Guinea Pig, Dog, Hamster, Rat, Horse
Host:	Rabbit
Clonality:	Polyclonal
Conjugate:	This C14orf1 antibody is un-conjugated
Application:	Immunohistochemistry (Paraffin-embedded Sections) (IHC (p)), Immunohistochemistry (IHC)

### Product Details

Brand:	IHC-plus™
Immunogen:	Synthetic 14 amino acid peptide from internal region of human C14orf1. Percent identity with other species by BLAST analysis: Human, Chimpanzee, Gorilla, Gibbon, Monkey, Galago, Marmoset, Mouse, Rat, Hamster, Elephant, Panda, Dog, Horse, Rabbit, Opossum, Guinea pig (100%), Bovine, Bat, Pig, Platypus, Salmon, Stickleback (93%), Smelt, Medaka, Pufferfish (86%).  Type of Immunogen: Synthetic peptide
Specificity:	Human C14orf1. BLAST analysis of the peptide immunogen showed no homology with other human proteins, except C14orf1 (100 %).
Predicted Reactivity:	Percent identity with other species by BLAST analysis: Human, Chimpanzee, Gorilla, Gibbon, Monkey, Galago, Marmoset, Mouse, Rat, Hamster, Elephant, Panda, Dog, Horse, Rabbit,

## Product Details

---

Opossum, Guinea pig (100%) Bovine, Bat, Pig, Platypus, Salmon, Stickleback (93%) Smelt, Medaka, Pufferfish (86%).

Purification: Immunoaffinity purified

## Target Details

---

Target: C14orf1

Alternative Name: C14orf1 ([C14orf1 Products](#))

Background: Name/Gene ID: C14orf1

Synonyms: C14orf1, ERG28, NET51

Gene ID: 11161

## Application Details

---

Application Notes: Approved: IHC, IHC-P (10 - 15 µg/mL)

Comment: Target Species of Antibody: Human

Restrictions: For Research Use only

## Handling

---

Format: Liquid

Concentration: Lot specific

Buffer: PBS, less than 0.1 % sodium azide.

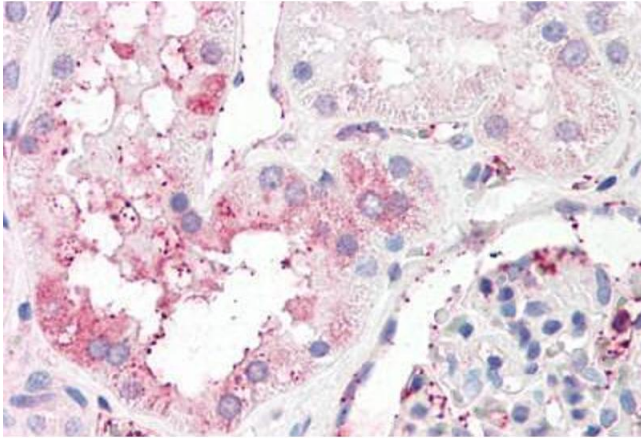
Preservative: Sodium azide

Precaution of Use: This product contains Sodium azide: a POISONOUS AND HAZARDOUS SUBSTANCE which should be handled by trained staff only.

Storage: 4 °C,-20 °C

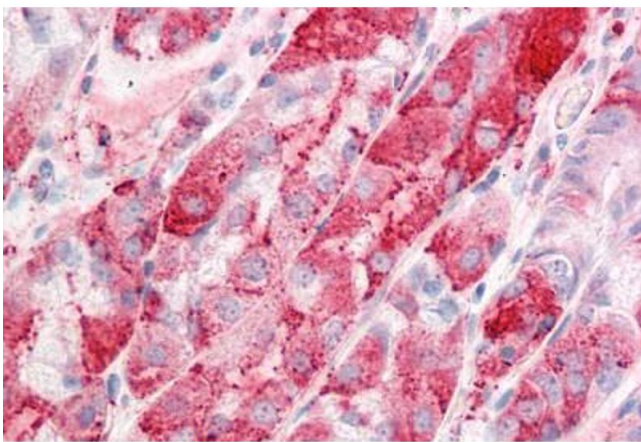
Storage Comment: Aliquot and store undiluted at -20°C or below for up to 1 year. Can be stored undiluted at 4°C for up to 1 month. Avoid freeze-thaw cycles.

Expiry Date: 12 months



#### Immunohistochemistry

**Image 1.** Anti-C14orf1 antibody ABIN960745 IHC staining of human kidney. Immunohistochemistry of formalin-fixed, paraffin-embedded tissue after heat-induced antigen retrieval.



#### Immunohistochemistry

**Image 2.** Anti-C14orf1 antibody ABIN960745 IHC staining of human stomach. Immunohistochemistry of formalin-fixed, paraffin-embedded tissue after heat-induced antigen retrieval.