



[Go to Product page](#)

Datasheet for ABIN960752
anti-CDCP1 antibody (N-Term)

3 Images

Overview

Quantity:	50 µg
Target:	CDCP1
Binding Specificity:	N-Term
Reactivity:	Human
Host:	Rabbit
Clonality:	Polyclonal
Conjugate:	This CDCP1 antibody is un-conjugated
Application:	Immunohistochemistry (IHC), Immunohistochemistry (Paraffin-embedded Sections) (IHC (p))

Product Details

Brand:	IHC-plus™
Immunogen:	Synthetic 15 amino acid peptide from N-Terminus of human CDCP1. Percent identity with other species by BLAST analysis: Human, Gorilla, Orangutan, Gibbon, Marmoset (100%), Chimpanzee, Monkey (93%). Type of Immunogen: Synthetic peptide
Specificity:	Human CDCP1. BLAST analysis of the peptide immunogen showed no homology with other human proteins.
Predicted Reactivity:	Percent identity with other species by BLAST analysis: Human, Gorilla, Orangutan, Gibbon, Marmoset (100%) Chimpanzee, Monkey (93%).
Purification:	Immunoaffinity purified

Target Details

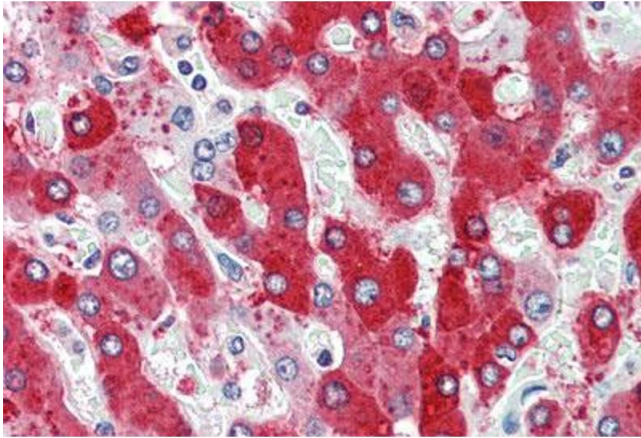
Target:	CDCP1
Alternative Name:	CDCP1 (CDCP1 Products)
Background:	Name/Gene ID: CDCP1 Synonyms: CDCP1, CD318 antigen, Membrane glycoprotein gp140, SIMA135, TRASK, CD318
Gene ID:	64866

Application Details

Application Notes:	Approved: IHC, IHC-P (5 - 10 µg/mL)
Comment:	Target Species of Antibody: Human
Restrictions:	For Research Use only

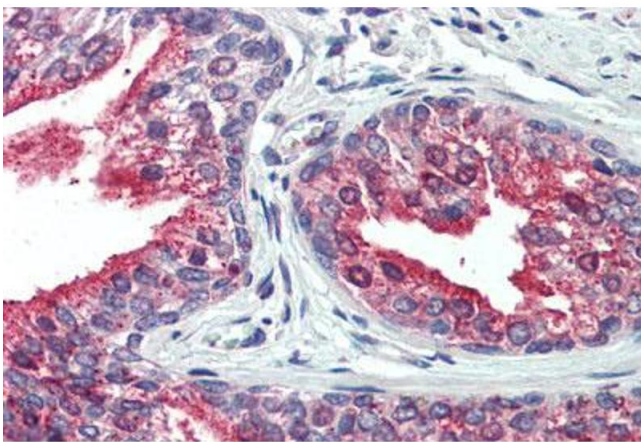
Handling

Format:	Liquid
Concentration:	Lot specific
Buffer:	PBS, less than 0.1 % sodium azide.
Preservative:	Sodium azide
Precaution of Use:	This product contains Sodium azide: a POISONOUS AND HAZARDOUS SUBSTANCE which should be handled by trained staff only.
Storage:	4 °C,-20 °C
Storage Comment:	Aliquot and store undiluted at -20°C or below for up to 1 year. Can be stored undiluted at 4°C for up to 1 month. Avoid freeze-thaw cycles.
Expiry Date:	12 months



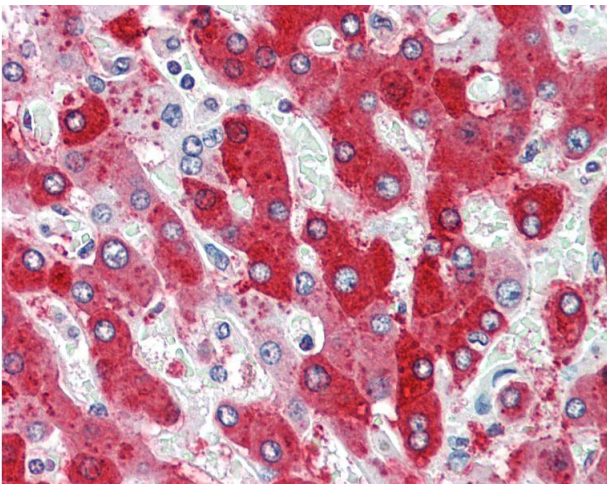
Immunohistochemistry

Image 1. Human, Liver: Formalin-Fixed Paraffin-Embedded (FFPE)



Immunohistochemistry

Image 2. Human, Prostate: Formalin-Fixed Paraffin-Embedded (FFPE)



Immunohistochemistry

Image 3. Human, Liver: Formalin-Fixed Paraffin-Embedded (FFPE)