

Datasheet for ABIN960770
anti-Embigin antibody (C-Term)

3 Images

[Go to Product page](#)

Overview

Quantity:	50 µg
Target:	Embigin (EMB)
Binding Specificity:	C-Term
Reactivity:	Human, Monkey
Host:	Rabbit
Clonality:	Polyclonal
Conjugate:	This Embigin antibody is un-conjugated
Application:	Immunohistochemistry (IHC), Immunohistochemistry (Paraffin-embedded Sections) (IHC (p))

Product Details

Brand:	IHC-plus™
Immunogen:	Synthetic 17 amino acid peptide from C-Terminus of human EMB. Percent identity with other species by BLAST analysis: Human, Chimpanzee, Gorilla, Monkey (100%), Orangutan (94%), Gibbon, Marmoset, Bat (88%), Bovine, Dog (82%). Type of Immunogen: Synthetic peptide
Specificity:	Human EMB. BLAST analysis of the peptide immunogen showed no homology with other human proteins, except RALGPS1 (53 %).
Predicted Reactivity:	Percent identity with other species by BLAST analysis: Human, Chimpanzee, Gorilla, Monkey (100%) Orangutan (94%) Gibbon, Marmoset, Bat (88%) Bovine, Dog (82%).
Purification:	Immunoaffinity purified

Target Details

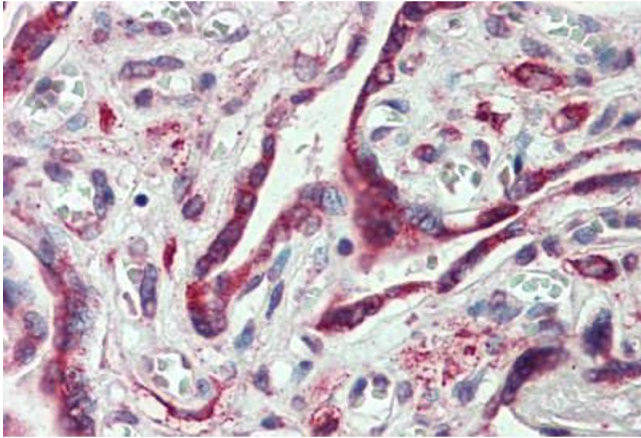
Target:	Embigin (EMB)
Alternative Name:	EMB/ Embigin (EMB Products)
Background:	Name/Gene ID: EMB Synonyms: EMB, Embigin homolog (mouse), Embigin, Embigin homolog
Gene ID:	133418

Application Details

Application Notes:	Approved: IHC, IHC-P (10 µg/mL) Usage: Immunohistochemistry: This antibody was validated for use in immunohistochemistry on a panel of 21 formalin-fixed, paraffin-embedded (FFPE) human tissues after heat induced antigen retrieval in pH 6.0 citrate buffer. After incubation with the primary antibody, slides were incubated with biotinylated secondary antibody, followed by alkaline phosphatase-streptavidin and chromogen. The stained slides were evaluated by a pathologist to confirm staining specificity. The optimal working concentration for this antibody was determined to be 10 µg/mL.
Comment:	Target Species of Antibody: Human
Restrictions:	For Research Use only

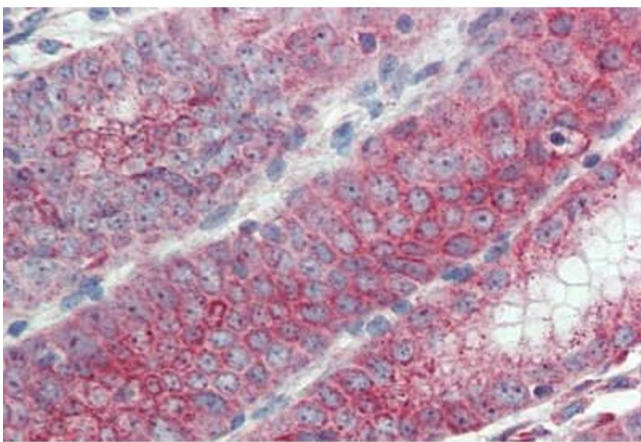
Handling

Format:	Liquid
Concentration:	Lot specific
Buffer:	PBS, less than 0.1 % sodium azide.
Preservative:	Sodium azide
Precaution of Use:	This product contains Sodium azide: a POISONOUS AND HAZARDOUS SUBSTANCE which should be handled by trained staff only.
Storage:	4 °C, -20 °C
Storage Comment:	Aliquot and store undiluted at -20°C or below for up to 1 year. Can be stored undiluted at 4°C for up to 1 month. Avoid freeze-thaw cycles.
Expiry Date:	12 months



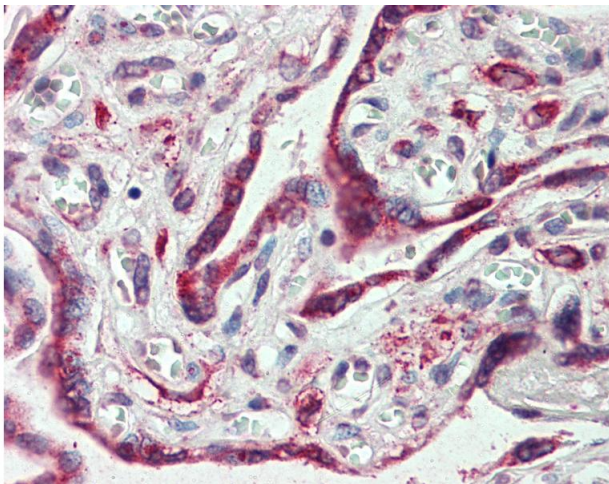
Immunohistochemistry

Image 1. Anti-EMB antibody ABIN960770 IHC staining of human placenta. Immunohistochemistry of formalin-fixed, paraffin-embedded tissue after heat-induced antigen retrieval.



Immunohistochemistry

Image 2. Anti-EMB antibody ABIN960770 IHC staining of human stomach. Immunohistochemistry of formalin-fixed, paraffin-embedded tissue after heat-induced antigen retrieval.



Immunohistochemistry

Image 3. Anti-EMB antibody IHC of human placenta. Immunohistochemistry of formalin-fixed, paraffin-embedded tissue after heat-induced antigen retrieval.