

Datasheet for ABIN960779

anti-GFPT1 antibody (N-Term)

3 Images



[Go to Product page](#)

Overview

Quantity:	50 µg
Target:	GFPT1
Binding Specificity:	N-Term
Reactivity:	Human, Rat, Mouse, Monkey, Cow, Guinea Pig, Horse, Pig, Bat, Chicken, Dog
Host:	Rabbit
Clonality:	Polyclonal
Conjugate:	This GFPT1 antibody is un-conjugated
Application:	Immunohistochemistry (IHC), Immunohistochemistry (Paraffin-embedded Sections) (IHC (p))

Product Details

Brand:	IHC-plus™
Immunogen:	<p>Synthetic 12 amino acid peptide from N-Terminus of human GFPT1. Percent identity with other species by BLAST analysis: Human, Chimpanzee, Gorilla, Orangutan, Gibbon, Monkey, Galago, Marmoset, Mouse, Rat, Elephant, Panda, Bovine, Dog, Bat, Horse, Pig, Opossum, Guinea pig, Zebra finch, Chicken (100%), Turkey, Platypus (92%).</p> <p>Type of Immunogen: Synthetic peptide</p>
Specificity:	Human GFPT1. BLAST analysis of the peptide immunogen showed no homology with other human proteins.
Predicted Reactivity:	Percent identity with other species by BLAST analysis: Human, Chimpanzee, Gorilla, Orangutan, Gibbon, Monkey, Galago, Marmoset, Mouse, Rat, Elephant, Panda, Bovine, Dog, Bat, Horse, Pig,

Product Details

Opossum, Guinea pig, Zebra finch, Chicken (100%) Turkey, Platypus (92%).

Purification: Immunoaffinity purified

Target Details

Target: GFPT1

Alternative Name: GFPT1 / GFAT ([GFPT1 Products](#))

Background: Name/Gene ID: GFPT1

Synonyms: GFPT1, GFA, GFPT, GFAT, GFAT1, GFAT1m, MSLG, CMSTA1, GFAT 1, GFPT1L

Gene ID: 2673

Pathways: [ER-Nucleus Signaling, Regulation of Carbohydrate Metabolic Process](#)

Application Details

Application Notes: Approved: IHC, IHC-P (2.5 - 5 µg/mL)

Comment: Target Species of Antibody: Human

Restrictions: For Research Use only

Handling

Format: Liquid

Concentration: Lot specific

Buffer: PBS, less than 0.1 % sodium azide.

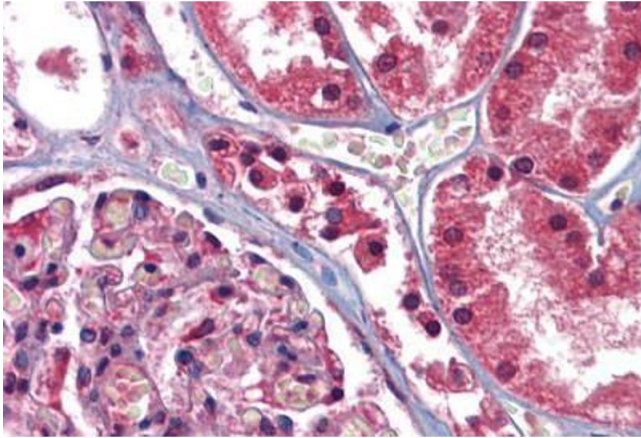
Preservative: Sodium azide

Precaution of Use: This product contains Sodium azide: a POISONOUS AND HAZARDOUS SUBSTANCE which should be handled by trained staff only.

Storage: 4 °C,-20 °C

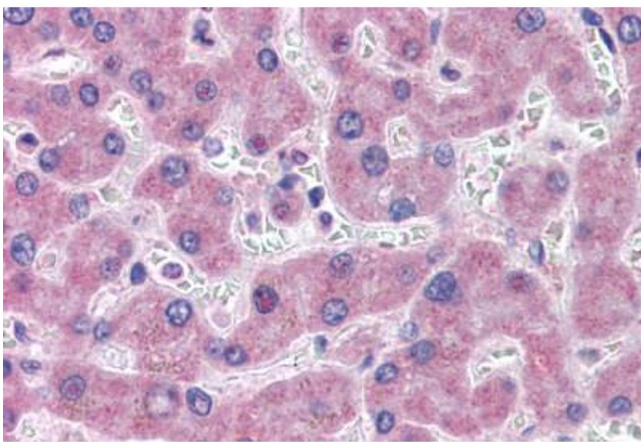
Storage Comment: Aliquot and store undiluted at -20°C or below for up to 1 year. Can be stored undiluted at 4°C for up to 1 month. Avoid freeze-thaw cycles.

Expiry Date: 12 months



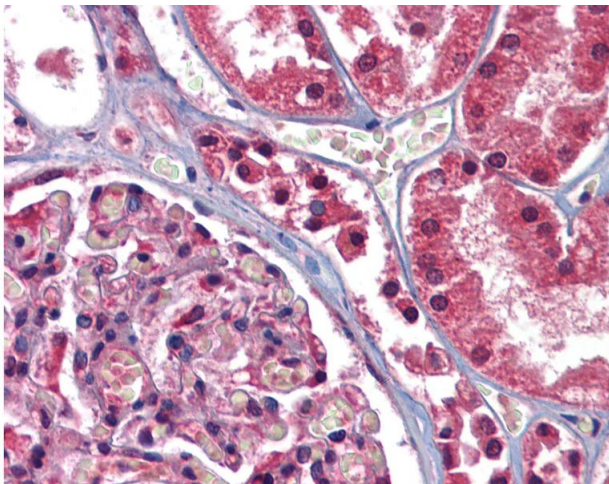
Immunohistochemistry

Image 1. Anti-GFPT1 antibody ABIN960779 IHC staining of human kidney. Immunohistochemistry of formalin-fixed, paraffin-embedded tissue after heat-induced antigen retrieval.



Immunohistochemistry

Image 2. Anti-GFPT1 antibody ABIN960779 IHC staining of human liver. Immunohistochemistry of formalin-fixed, paraffin-embedded tissue after heat-induced antigen retrieval.



Immunohistochemistry

Image 3. Anti-GFPT1 antibody IHC of human kidney. Immunohistochemistry of formalin-fixed, paraffin-embedded tissue after heat-induced antigen retrieval.