



Datasheet for ABIN960818

anti-SLITRK6 antibody (Cytoplasmic Domain)



[Go to Product page](#)

3 Images

Overview

Quantity:	50 µg
Target:	SLITRK6
Binding Specificity:	Cytoplasmic Domain
Reactivity:	Human, Cow, Horse
Host:	Rabbit
Clonality:	Polyclonal
Conjugate:	This SLITRK6 antibody is un-conjugated
Application:	Immunohistochemistry (Paraffin-embedded Sections) (IHC (p)), Immunohistochemistry (IHC)

Product Details

Brand:	IHC-plus™
Immunogen:	Synthetic 17 amino acid peptide from cytoplasmic domain of human SLITRK6. Percent identity with other species by BLAST analysis: Human, Gorilla, Gibbon, Marmoset, Bovine, Horse (100%), Monkey, Bat (94%), Mouse, Elephant, Pig (88%), Rat, Dog, Panda (82%). Type of Immunogen: Synthetic peptide
Specificity:	Human SLITRK6. BLAST analysis of the peptide immunogen showed no homology with other human proteins.
Predicted Reactivity:	Percent identity with other species by BLAST analysis: Human, Gorilla, Gibbon, Marmoset, Bovine, Horse (100%) Monkey, Bat (94%) Mouse, Elephant, Pig (88%) Rat, Dog, Panda (82%).
Purification:	Immunoaffinity purified

Target Details

Target: SLITRK6

Alternative Name: SLITRK6 ([SLITRK6 Products](#))

Background: Name/Gene ID: SLITRK6

Synonyms: SLITRK6, Slit and trk like gene 6, SLIT and NTRK-like protein 6

Gene ID: 84189

Application Details

Application Notes: Approved: IHC, IHC-P (15 - 20 µg/mL)

Comment: Target Species of Antibody: Human

Restrictions: For Research Use only

Handling

Format: Liquid

Concentration: Lot specific

Buffer: PBS, less than 0.1 % sodium azide.

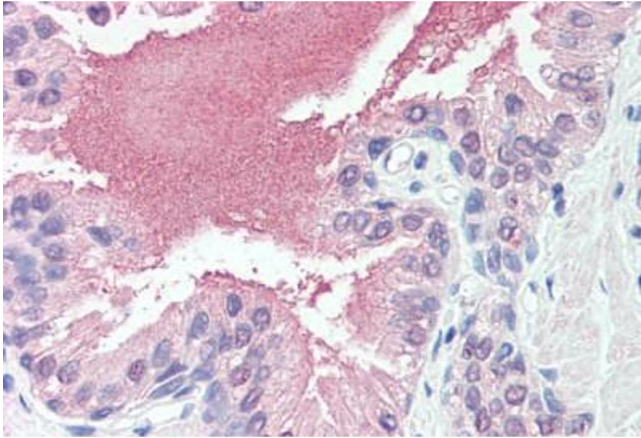
Preservative: Sodium azide

Precaution of Use: This product contains Sodium azide: a POISONOUS AND HAZARDOUS SUBSTANCE which should be handled by trained staff only.

Storage: 4 °C,-20 °C

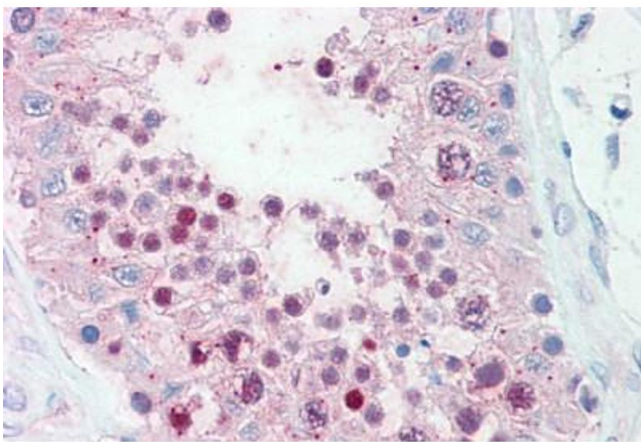
Storage Comment: Aliquot and store undiluted at -20°C or below for up to 1 year. Can be stored undiluted at 4°C for up to 1 month. Avoid freeze-thaw cycles.

Expiry Date: 12 months



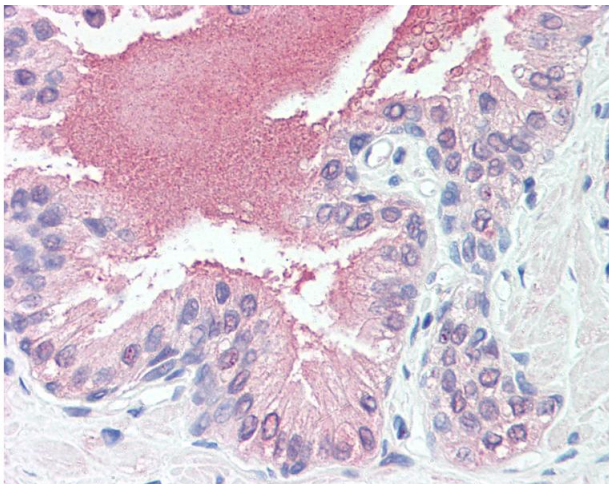
Immunohistochemistry

Image 1. Anti-SLITRK6 antibody ABIN960818 IHC staining of human prostate. Immunohistochemistry of formalin-fixed, paraffin-embedded tissue after heat-induced antigen retrieval.



Immunohistochemistry

Image 2. Anti-SLITRK6 antibody ABIN960818 IHC staining of human testis. Immunohistochemistry of formalin-fixed, paraffin-embedded tissue after heat-induced antigen retrieval.



Immunohistochemistry

Image 3. Anti-SLITRK6 antibody IHC of human prostate. Immunohistochemistry of formalin-fixed, paraffin-embedded tissue after heat-induced antigen retrieval.