

Datasheet for ABIN960821

**anti-STEAP2 antibody (Internal Region)****3** Images[Go to Product page](#)

## Overview

Quantity:	50 µg
Target:	STEAP2
Binding Specificity:	Internal Region
Reactivity:	Human, Mouse, Rat, Dog, Guinea Pig, Horse, Rabbit, Bat, Hamster, Monkey
Host:	Rabbit
Clonality:	Polyclonal
Conjugate:	This STEAP2 antibody is un-conjugated
Application:	Immunohistochemistry (IHC), Immunohistochemistry (Paraffin-embedded Sections) (IHC (p))

## Product Details

Brand:	IHC-plus™
Immunogen:	<p>Synthetic 15 amino acid peptide from internal region of human STEAP2. Percent identity with other species by BLAST analysis: Human, Chimpanzee, Gorilla, Orangutan, Gibbon, Baboon, Monkey, Galago, Marmoset, Mouse, Rat, Hamster, Elephant, Panda, Bat, Dog, Rabbit, Horse, Opossum, Guinea pig, Armadillo, Platypus (100%), Bovine, Pig, Turkey, Chicken, Zebrafish (93%), Shrew, Zebra finch, Xenopus (87%).</p> <p>Type of Immunogen: Synthetic peptide</p>
Specificity:	Human STEAP2. BLAST analysis of the peptide immunogen showed no homology with other human proteins.
Predicted Reactivity:	Percent identity with other species by BLAST analysis: Human, Chimpanzee, Gorilla, Orangutan,

## Product Details

Gibbon, Baboon, Monkey, Galago, Marmoset, Mouse, Rat, Hamster, Elephant, Panda, Bat, Dog, Rabbit, Horse, Opossum, Guinea pig, Armadillo, Platypus (100%) Bovine, Pig, Turkey, Chicken, Zebrafish (93%) Shrew, Zebra finch, Xenopus (87%).

Purification: Immunoaffinity purified

## Target Details

Target: STEAP2

Alternative Name: STEAP2 ([STEAP2 Products](#))

Background: Name/Gene ID: STEAP2

Synonyms: STEAP2, IPCA-1, PCANAP1, IPCA1, PUMPCn, STAMP1, STMP, Metalloreductase STEAP2

Gene ID: 261729

Pathways: [Transition Metal Ion Homeostasis](#)

## Application Details

Application Notes: Approved: IHC, IHC-P (10 µg/mL)

Usage: Immunohistochemistry: This antibody was validated for use in immunohistochemistry on a panel of 21 formalin-fixed, paraffin-embedded (FFPE) human tissues after heat induced antigen retrieval in pH 6.0 citrate buffer. After incubation with the primary antibody, slides were incubated with biotinylated secondary antibody, followed by alkaline phosphatase-streptavidin and chromogen. The stained slides were evaluated by a pathologist to confirm staining specificity. The optimal working concentration for this antibody was determined to be 10 µg/mL.

Comment: Target Species of Antibody: Human

Restrictions: For Research Use only

## Handling

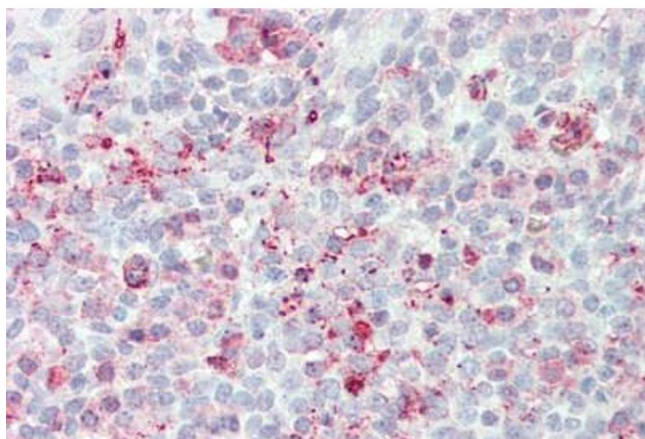
Format: Liquid

Concentration: Lot specific

## Handling

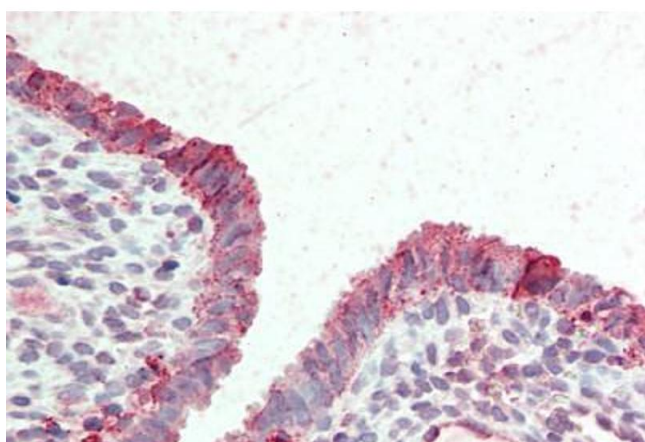
Buffer:	PBS, less than 0.1 % sodium azide.
Preservative:	Sodium azide
Precaution of Use:	This product contains Sodium azide: a POISONOUS AND HAZARDOUS SUBSTANCE which should be handled by trained staff only.
Storage:	4 °C, -20 °C
Storage Comment:	Aliquot and store undiluted at -20°C or below for up to 1 year. Can be stored undiluted at 4°C for up to 1 month. Avoid freeze-thaw cycles.
Expiry Date:	12 months

## Images



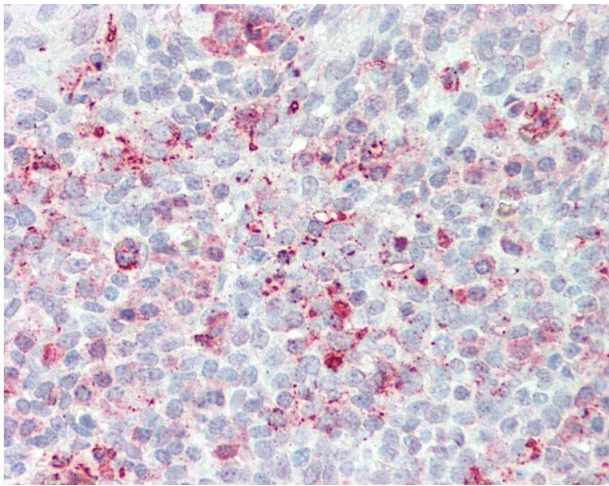
### Immunohistochemistry

**Image 1.** Anti-STEAP2 antibody ABIN960821 IHC staining of human tonsil. Immunohistochemistry of formalin-fixed, paraffin-embedded tissue after heat-induced antigen retrieval.



### Immunohistochemistry

**Image 2.** Anti-STEAP2 antibody ABIN960821 IHC staining of human uterus. Immunohistochemistry of formalin-fixed, paraffin-embedded tissue after heat-induced antigen retrieval.



#### Immunohistochemistry

**Image 3.** Anti-STEAP2 antibody IHC of human tonsil. Immunohistochemistry of formalin-fixed, paraffin-embedded tissue after heat-induced antigen retrieval.