

Datasheet for ABIN960822  
**anti-STEAP2 antibody (C-Term)**

## 3 Images

[Go to Product page](#)

## Overview

Quantity:	50 µg
Target:	STEAP2
Binding Specificity:	C-Term
Reactivity:	Human, Cow, Bat
Host:	Rabbit
Clonality:	Polyclonal
Conjugate:	This STEAP2 antibody is un-conjugated
Application:	Immunohistochemistry (IHC), Immunohistochemistry (Paraffin-embedded Sections) (IHC (p))

## Product Details

Brand:	IHC-plus™
Immunogen:	Synthetic 15 amino acid peptide from C-terminus of human STEAP2. Percent identity with other species by BLAST analysis: Bovine, Bat (100%), Human, Gibbon, Baboon, Galago, Mouse, Dog, Elephant, Panda, Horse, Opossum (93%), Marmoset, Rat, Shrew, Hamster, Rabbit, Pig, Armadillo (87%), Lizard (80%).  Type of Immunogen: Synthetic peptide
Specificity:	Human STEAP2. BLAST analysis of the peptide immunogen showed no homology with other human proteins.
Predicted Reactivity:	Percent identity with other species by BLAST analysis: Bovine, Bat (100%) Human, Gibbon, Baboon, Galago, Mouse, Dog, Elephant, Panda, Horse, Opossum (93%) Marmoset, Rat, Shrew,

## Product Details

Hamster, Rabbit, Pig, Armadillo (87%) Lizard (80%).

Purification: Immunoaffinity purified

## Target Details

Target: STEAP2

Alternative Name: STEAP2 ([STEAP2 Products](#))

Background: Name/Gene ID: STEAP2

Synonyms: STEAP2, IPCA-1, PCANAP1, IPCA1, PUMPCn, STAMP1, STMP, Metalloreductase  
STEAP2

Gene ID: 261729

Pathways: [Transition Metal Ion Homeostasis](#)

## Application Details

Application Notes: Approved: IHC, IHC-P (10 - 12.5 µg/mL)

Comment: Target Species of Antibody: Human

Restrictions: For Research Use only

## Handling

Format: Liquid

Concentration: Lot specific

Buffer: PBS, less than 0.1 % sodium azide.

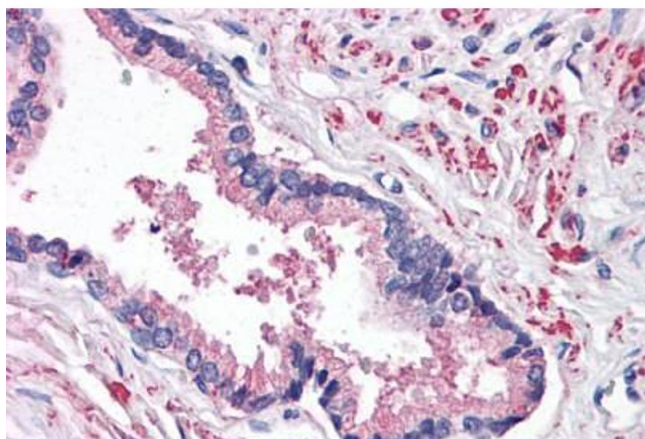
Preservative: Sodium azide

Precaution of Use: This product contains Sodium azide: a POISONOUS AND HAZARDOUS SUBSTANCE which should be handled by trained staff only.

Storage: 4 °C, -20 °C

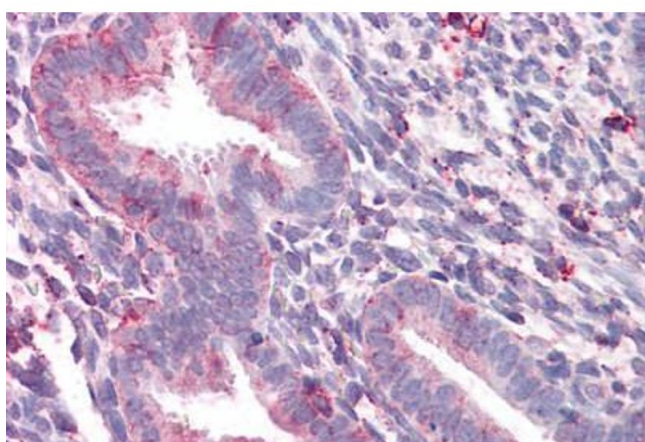
Storage Comment: Aliquot and store undiluted at -20°C or below for up to 1 year. Can be stored undiluted at 4°C for up to 1 month. Avoid freeze-thaw cycles.

Expiry Date: 12 months



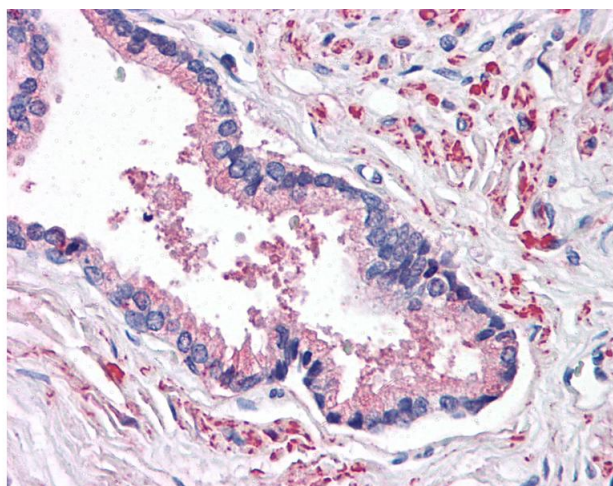
#### Immunohistochemistry

**Image 1.** Anti-STEAP2 antibody ABIN960822 IHC staining of human prostate. Immunohistochemistry of formalin-fixed, paraffin-embedded tissue after heat-induced antigen retrieval.



#### Immunohistochemistry

**Image 2.** Anti-STEAP2 antibody ABIN960822 IHC staining of human uterus. Immunohistochemistry of formalin-fixed, paraffin-embedded tissue after heat-induced antigen retrieval.



#### Immunohistochemistry

**Image 3.** Anti-STEAP2 antibody IHC of human prostate. Immunohistochemistry of formalin-fixed, paraffin-embedded tissue after heat-induced antigen retrieval.