

Datasheet for ABIN960825
anti-SUSD2 antibody (Internal Region)

2 Images

[Go to Product page](#)

Overview

Quantity:	50 µg
Target:	SUSD2
Binding Specificity:	Internal Region
Reactivity:	Human, Monkey
Host:	Rabbit
Clonality:	Polyclonal
Conjugate:	This SUSD2 antibody is un-conjugated
Application:	Immunohistochemistry (IHC), Immunohistochemistry (Paraffin-embedded Sections) (IHC (p))

Product Details

Brand:	IHC-plus™
Immunogen:	Synthetic 18 amino acid peptide from internal region of human SUSD2. Percent identity with other species by BLAST analysis: Human, Gorilla, Monkey (100%), Chimpanzee, Orangutan (94%), Gibbon, Panda (89%), Galago, Opossum (83%). Type of Immunogen: Synthetic peptide
Specificity:	Human SUSD2. BLAST analysis of the peptide immunogen showed no homology with other human proteins.
Predicted Reactivity:	Percent identity with other species by BLAST analysis: Human, Gorilla, Monkey (100%) Chimpanzee, Orangutan (94%) Gibbon, Panda (89%) Galago, Opossum (83%).
Purification:	Immunoaffinity purified

Target Details

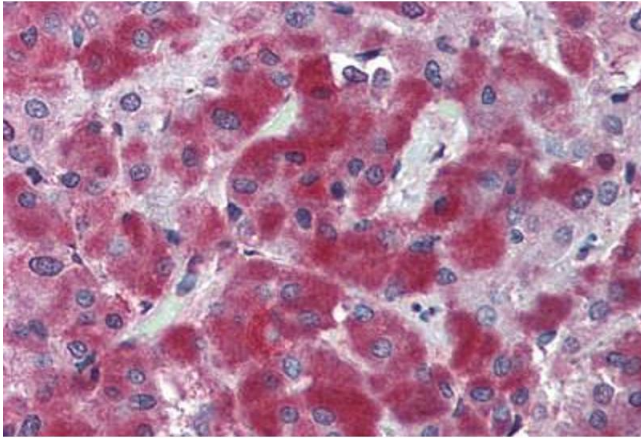
Target:	SUSD2
Alternative Name:	SUSD2 (SUSD2 Products)
Background:	Name/Gene ID: SUSD2 Synonyms: SUSD2, BK65A6.2, Sushi domain containing 2
Gene ID:	56241

Application Details

Application Notes:	Approved: IHC, IHC-P (15 µg/mL) Usage: Immunohistochemistry: This antibody was validated for use in immunohistochemistry on a panel of 21 formalin-fixed, paraffin-embedded (FFPE) human tissues after heat induced antigen retrieval in pH 6.0 citrate buffer. After incubation with the primary antibody, slides were incubated with biotinylated secondary antibody, followed by alkaline phosphatase-streptavidin and chromogen. The stained slides were evaluated by a pathologist to confirm staining specificity. The optimal working concentration for this antibody was determined to be 15 µg/mL.
Comment:	Target Species of Antibody: Human
Restrictions:	For Research Use only

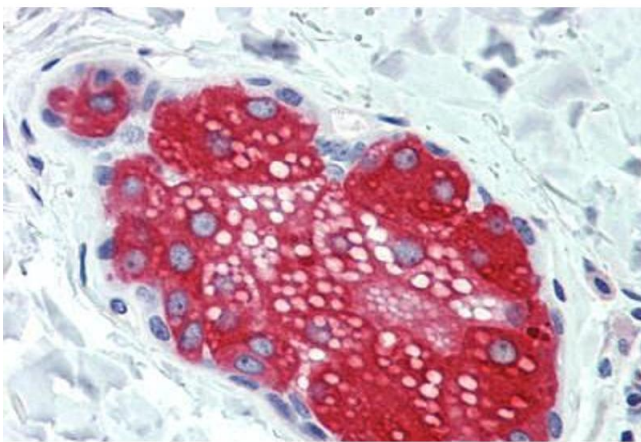
Handling

Format:	Liquid
Concentration:	Lot specific
Buffer:	PBS, less than 0.1 % sodium azide.
Preservative:	Sodium azide
Precaution of Use:	This product contains Sodium azide: a POISONOUS AND HAZARDOUS SUBSTANCE which should be handled by trained staff only.
Storage:	4 °C, -20 °C
Storage Comment:	Aliquot and store undiluted at -20°C or below for up to 1 year. Can be stored undiluted at 4°C for up to 1 month. Avoid freeze-thaw cycles.
Expiry Date:	12 months



Immunohistochemistry

Image 1. Anti-SUSD2 antibody ABIN960825 IHC staining of human adrenal. Immunohistochemistry of formalin-fixed, paraffin-embedded tissue after heat-induced antigen retrieval.



Immunohistochemistry

Image 2. Anti-SUSD2 antibody ABIN960825 IHC staining of human skin, sebaceous gland. Immunohistochemistry of formalin-fixed, paraffin-embedded tissue after heat-induced antigen retrieval.