



[Go to Product page](#)

Datasheet for ABIN961209
anti-PTPN22 antibody

1 Image

Overview

Quantity:	50 µg
Target:	PTPN22
Reactivity:	Human
Host:	Mouse
Clonality:	Monoclonal
Conjugate:	This PTPN22 antibody is un-conjugated
Application:	Western Blotting (WB), ELISA, Immunohistochemistry (IHC), Immunohistochemistry (Paraffin-embedded Sections) (IHC (p))

Product Details

Brand:	IHC-plus™
Immunogen:	Recombinant protein Type of Immunogen: Recombinant protein
Clone:	1A6
Isotype:	IgG2a kappa
Specificity:	Human PTPN22
Purification:	Purified from ascites by Protein A

Target Details

Target:	PTPN22
---------	--------

Target Details

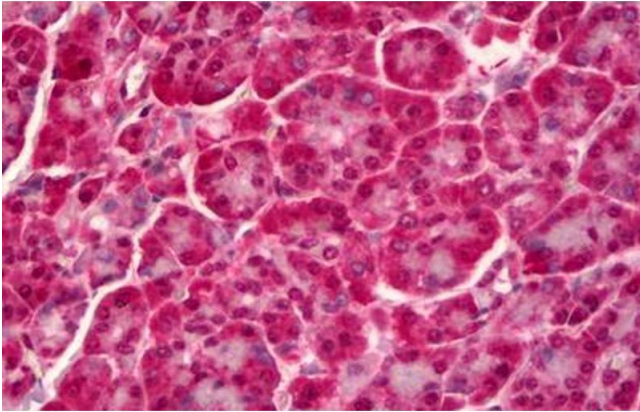
Alternative Name:	PTPN22 / PEP (PTPN22 Products)
Background:	Name/Gene ID: PTPN22 Subfamily: NT4 Family: Protein Phosphatase Synonyms: PTPN22, 70zpep, Lymphoid phosphatase, LYP, PEST-domain phosphatase, LYP2, LYP1, PEP, PTPN8
Gene ID:	26191
UniProt:	Q9Y2R2

Application Details

Application Notes:	Approved: ELISA, IHC, IHC-P (5 µg/mL), WB Usage: Western Blot: Recombinant protein.
Comment:	Target Species of Antibody: Human
Restrictions:	For Research Use only

Handling

Format:	Liquid
Concentration:	Lot specific
Buffer:	PBS, pH 7.4
Handling Advice:	avoid freeze thaw cycles.
Storage:	4 °C, -20 °C
Storage Comment:	Short term 4°C, long term aliquot and store at -20°C, avoid freeze-thaw cycles.



Immunohistochemistry

Image 1. Anti-PTPN22 antibody IHC staining of human pancreas. Immunohistochemistry of formalin-fixed, paraffin-embedded tissue after heat-induced antigen retrieval. Antibody ABIN961209 concentration 5 ug/ml.