

Datasheet for ABIN961286
anti-PPP2R2B antibody



[Go to Product page](#)

1 Image

Overview

Quantity:	50 µg
Target:	PPP2R2B
Reactivity:	Human
Host:	Mouse
Clonality:	Monoclonal
Conjugate:	This PPP2R2B antibody is un-conjugated
Application:	Western Blotting (WB), ELISA, Immunoprecipitation (IP), Immunohistochemistry (Paraffin-embedded Sections) (IHC (p)), Immunohistochemistry (IHC)

Product Details

Brand:	IHC-plus™
Immunogen:	Recombinant protein Type of Immunogen: Recombinant protein
Clone:	1F3
Isotype:	IgG2a kappa
Specificity:	Human PPP2R2B
Purification:	Purified from ascites by Protein A

Target Details

Target:	PPP2R2B
---------	---------

Target Details

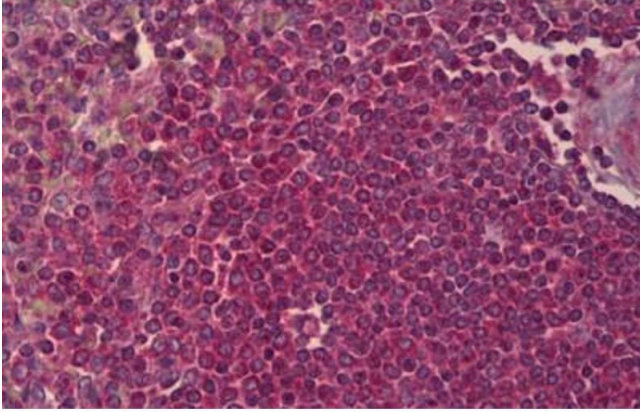
Alternative Name:	PPP2R2B (PPP2R2B Products)
Background:	Name/Gene ID: PPP2R2B Family: Protein Phosphatase Regulatory Subunit Synonyms: PPP2R2B, B55BETA, PP2ABBETA, PP2APR55BETA, PP2A subunit B isoform beta, PR2AB55BETA, PR55-BETA, SCA12, Spinocerebellar ataxia 12, PP2A subunit B isoform R2-beta, PP2AB55BETA, PP2APR55B, PR55BETA, PR2ABBETA, PR2APR55BETA, PR52B
Gene ID:	5521
UniProt:	Q00005
Pathways:	PI3K-Akt Signaling , Mitotic G1-G1/S Phases , Hepatitis C

Application Details

Application Notes:	Approved: ELISA, IHC, IHC-P (5 µg/mL), IP, WB Usage: Western Blot: Recombinant protein.
Comment:	Target Species of Antibody: Human
Restrictions:	For Research Use only

Handling

Format:	Liquid
Concentration:	Lot specific
Buffer:	PBS, pH 7.4
Handling Advice:	avoid freeze thaw cycles.
Storage:	4 °C,-20 °C
Storage Comment:	Short term 4°C, long term aliquot and store at -20°C, avoid freeze-thaw cycles.



Immunohistochemistry

Image 1. Anti-PPP2R2B antibody IHC staining of human spleen. Immunohistochemistry of formalin-fixed, paraffin-embedded tissue after heat-induced antigen retrieval. Antibody ABIN961286 concentration 5 ug/ml.