



[Go to Product page](#)

Datasheet for ABIN961318
anti-BIN3 antibody (AA 1-200)

1 Image

Overview

Quantity:	50 µg
Target:	BIN3
Binding Specificity:	AA 1-200
Reactivity:	Human
Host:	Mouse
Clonality:	Monoclonal
Conjugate:	This BIN3 antibody is un-conjugated
Application:	Western Blotting (WB), ELISA

Product Details

Immunogen:	BIN3 (AAH01223, 1 a.a. ~ 200 a.a) full-length recombinant protein with GST tag. MW of the GST tag alone is 26 KDa. Type of Immunogen: Recombinant protein
Clone:	1H8
Isotype:	IgG2a kappa
Specificity:	Human BIN3
Purification:	Purified from ascites by Protein A

Target Details

Target:	BIN3
---------	------

Target Details

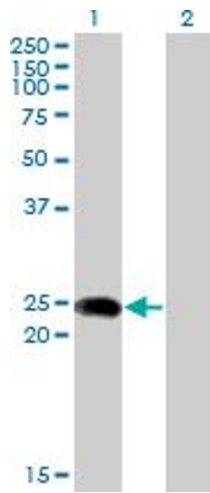
Alternative Name:	BIN3 (BIN3 Products)
Background:	Name/Gene ID: BIN3 Synonyms: BIN3, Bridging integrator 3
Gene ID:	55909
UniProt:	Q9NQY0

Application Details

Application Notes:	Approved: ELISA, WB Usage: Western Blot: Transfected lysate, Recombinant protein.
Comment:	Target Species of Antibody: Human
Restrictions:	For Research Use only

Handling

Format:	Liquid
Concentration:	Lot specific
Buffer:	PBS, pH 7.4
Handling Advice:	Aliquot to Avoid repeated freezing and thawing.
Storage:	-20 °C
Storage Comment:	Store at -20°C or lower. Aliquot to avoid freeze-thaw cycles.



Western Blotting

Image 1.