



[Go to Product page](#)

Datasheet for ABIN961419

## anti-ARHGEF11 antibody (AA 651-750)

### 2 Images

#### Overview

Quantity:	50 µg
Target:	ARHGEF11
Binding Specificity:	AA 651-750
Reactivity:	Human
Host:	Mouse
Clonality:	Monoclonal
Conjugate:	This ARHGEF11 antibody is un-conjugated
Application:	Western Blotting (WB), ELISA, Immunohistochemistry (IHC), Immunohistochemistry (Paraffin-embedded Sections) (IHC (p))

#### Product Details

Brand:	IHC-plus™
Immunogen:	Partial recombinant protein corresponding to human ARHGEF11 (AAH57394, 651 a.a. ~ 750 a.a) with GST tag. Type of Immunogen: Recombinant protein
Clone:	2H7
Isotype:	IgG1 kappa
Specificity:	Human ARHGEF11
Purification:	Purified from ascites by Protein A

## Target Details

---

Target:	ARHGEF11
Alternative Name:	ARHGEF11 ( <a href="#">ARHGEF11 Products</a> )
Background:	Name/Gene ID: ARHGEF11  Synonyms: ARHGEF11, GTRAP48, PDZ-RHOGEF, KIAA0380
Gene ID:	9826
UniProt:	<a href="#">O15085</a>
Pathways:	<a href="#">Neurotrophin Signaling Pathway</a> , <a href="#">Regulation of G-Protein Coupled Receptor Protein Signaling</a>

## Application Details

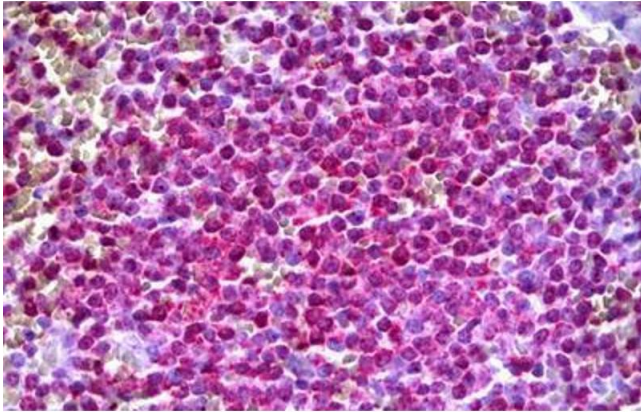
---

Application Notes:	Approved: ELISA, IHC, IHC-P (10 µg/mL), WB  Usage: Sandwich ELISA: Recombinant protein. Western Blot: Recombinant protein.
Comment:	Target Species of Antibody: Human
Restrictions:	For Research Use only

## Handling

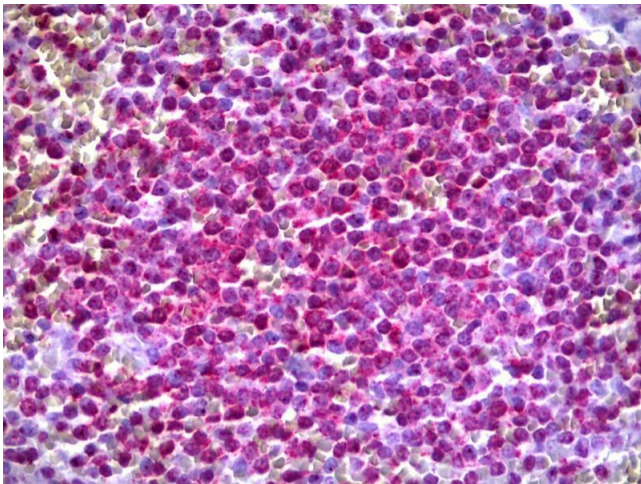
---

Format:	Liquid
Concentration:	Lot specific
Buffer:	PBS, pH 7.4. Sourced in Ascites.
Handling Advice:	avoid freeze thaw cycles.
Storage:	4 °C, -20 °C
Storage Comment:	Short term 4°C, long term aliquot and store at -20°C, avoid freeze-thaw cycles.



#### Immunohistochemistry

**Image 1.** Anti-ARHGEF11 antibody IHC staining of human spleen. Immunohistochemistry of formalin-fixed, paraffin-embedded tissue after heat-induced antigen retrieval. Antibody ABIN961419 concentration 10 ug/ml.



#### Immunohistochemistry

**Image 2.** Anti-ARHGEF11 antibody IHC of human spleen. Immunohistochemistry of formalin-fixed, paraffin-embedded tissue after heat-induced antigen retrieval. Antibody concentration 10 ug/ml.