



[Go to Product page](#)

Datasheet for ABIN961437

## anti-MLKL antibody (AA 371-472)

### 2 Images

#### Overview

Quantity:	50 µg
Target:	MLKL
Binding Specificity:	AA 371-472
Reactivity:	Human
Host:	Mouse
Clonality:	Monoclonal
Application:	Western Blotting (WB), ELISA, Immunohistochemistry (IHC), Immunohistochemistry (Paraffin-embedded Sections) (IHC (p))

#### Product Details

Brand:	IHC-plus™
Immunogen:	MLKL (NP_689862, 371 a.a. ~ 472 a.a) partial recombinant protein with GST tag. MW of the GST tag alone is 26 KDa.  Type of Immunogen: Recombinant protein
Clone:	3B2
Isotype:	IgG2a kappa
Specificity:	Human MLKL
Purification:	Purified from ascites by Protein A

## Target Details

---

Target:	MLKL
Alternative Name:	MLKL ( <a href="#">MLKL Products</a> )
Background:	Name/Gene ID: MLKL Subfamily: Provisional protein kinase Family: Protein Kinase  Synonyms: MLKL
Gene ID:	197259
NCBI Accession:	<a href="#">NP_689862</a>
UniProt:	<a href="#">Q8NB16</a>

## Application Details

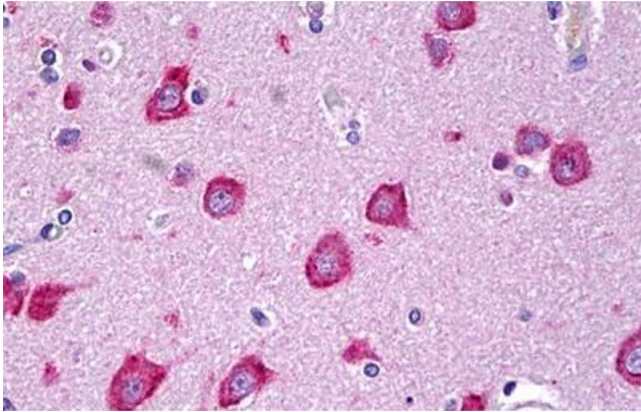
---

Application Notes:	Approved: ELISA, IHC, IHC-P (10 µg/mL), WB  Usage: Immunohistochemistry: Formalin-fixed paraffin-embedded sections. Sandwich ELISA: Recombinant protein. Western Blot: Recombinant protein.
Comment:	Target Species of Antibody: Human
Restrictions:	For Research Use only

## Handling

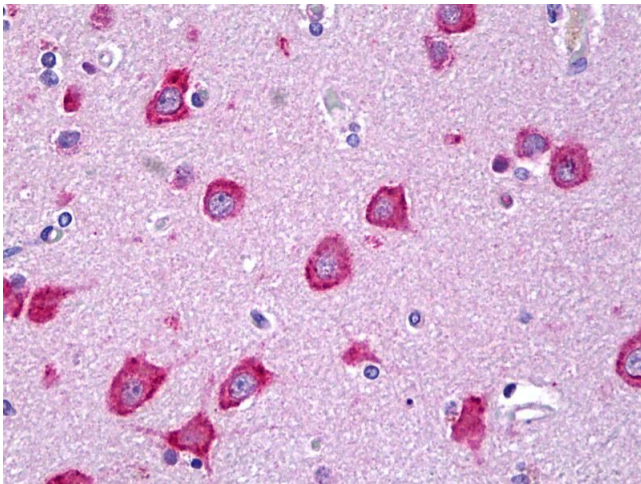
---

Format:	Liquid
Concentration:	Lot specific
Buffer:	PBS, pH 7.4.
Handling Advice:	avoid freeze thaw cycles.
Storage:	-20 °C
Storage Comment:	Store at -20°C or lower. Aliquot to avoid freeze-thaw cycles.



#### Immunohistochemistry

**Image 1.** Anti-MLKL antibody IHC staining of human brain, cortex neurons. Immunohistochemistry of formalin-fixed, paraffin-embedded tissue after heat-induced antigen retrieval. Antibody ABIN961437 concentration 10 ug/ml.



#### Immunohistochemistry

**Image 2.** Anti-MLKL antibody IHC of human brain, cortex neurons. Immunohistochemistry of formalin-fixed, paraffin-embedded tissue after heat-induced antigen retrieval. Antibody concentration 10 ug/ml.