



[Go to Product page](#)

Datasheet for ABIN961540
anti-TOMM22 antibody (AA 1-143)

1 Image

Overview

Quantity:	50 µg
Target:	TOMM22
Binding Specificity:	AA 1-143
Reactivity:	Human, Mouse, Rat
Host:	Mouse
Clonality:	Monoclonal
Conjugate:	This TOMM22 antibody is un-conjugated
Application:	Western Blotting (WB), ELISA, Immunohistochemistry (IHC), Immunofluorescence (IF), Immunohistochemistry (Paraffin-embedded Sections) (IHC (p))

Product Details

Brand:	IHC-plus™
Immunogen:	TOMM22 (AAH09363, 1 a.a. ~ 143 a.a) full length recombinant protein with GST tag. MW of the GST tag alone is 26 KDa. Type of Immunogen: Recombinant protein
Clone:	4G4
Isotype:	IgG2a kappa
Specificity:	Human TOMM22
Purification:	Purified from ascites by Protein A

Target Details

Target: TOMM22

Alternative Name: TOMM22 / TOM22 ([TOMM22 Products](#))

Background: Name/Gene ID: TOMM22

Synonyms: TOMM22, 1C9-2, MSTP065, MST065, HTom22, TOM22

Gene ID: 56993

Application Details

Application Notes: Approved: ELISA, IF (10 µg/mL), IHC, IHC-P (10 µg/mL), WB

Usage: Immunohistochemistry: Formalin-fixed paraffin-embedded sections. RNAi Knockdown: Antibody validated. Sandwich ELISA: Recombinant protein. Western Blot using transfected cell lysates, cell line lysates and the recombinant protein used as the immunogen.

Comment: Target Species of Antibody: Human

Restrictions: For Research Use only

Handling

Format: Liquid

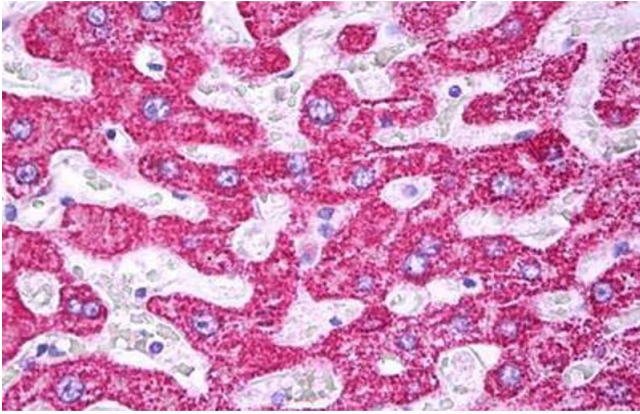
Concentration: Lot specific

Buffer: PBS, pH 7.4. Sourced in Ascites.

Handling Advice: avoid freeze thaw cycles.

Storage: 4 °C, -20 °C

Storage Comment: Short term 4°C, long term aliquot and store at -20°C, avoid freeze-thaw cycles.



Immunohistochemistry

Image 1. Anti-TOMM22 antibody IHC staining of human liver, hepatocytes. Immunohistochemistry of formalin-fixed, paraffin-embedded tissue after heat-induced antigen retrieval. Antibody ABIN961540 concentration 10 ug/ml.