

Datasheet for ABIN961545
anti-JNK antibody



[Go to Product page](#)

3 Images

Overview

Quantity:	50 µg
Target:	JNK (MAPK8)
Reactivity:	Human
Host:	Mouse
Clonality:	Monoclonal
Conjugate:	This JNK antibody is un-conjugated
Application:	Western Blotting (WB), ELISA, Immunohistochemistry (IHC), Immunohistochemistry (Paraffin-embedded Sections) (IHC (p)), Immunoprecipitation (IP)

Product Details

Brand:	IHC-plus™
Immunogen:	Recombinant protein Type of Immunogen: Recombinant protein
Clone:	4H5
Isotype:	IgG2b kappa
Specificity:	Human MAPK8 / JNK1
Purification:	Purified from ascites by Protein A

Target Details

Target:	JNK (MAPK8)
---------	-------------

Target Details

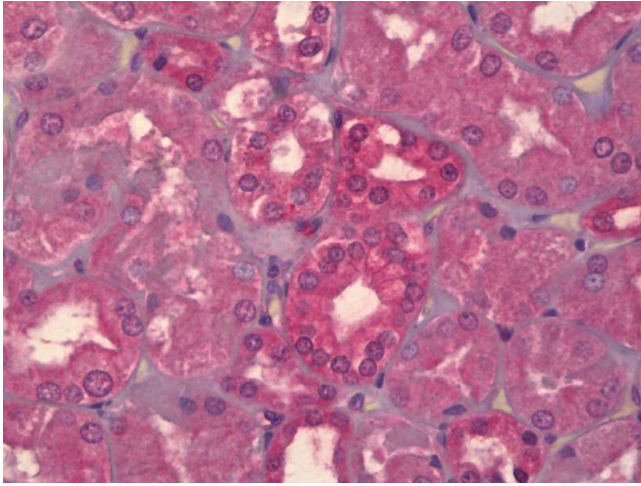
Alternative Name:	MAPK8 / JNK1 / JNK (MAPK8 Products)
Background:	Name/Gene ID: MAPK8 Subfamily: MAPK Family: Protein Kinase Synonyms: MAPK8, JNK, JNK1, JNK1A2, JNK-46, MAP kinase 8, PRKM8, SAPK1, SAPK1c, MAPK 8, C-Jun N-terminal kinase 1, JNK21B1/2, JUN N-terminal kinase
Gene ID:	5599
UniProt:	P45983
Pathways:	MAPK Signaling , WNT Signaling , TLR Signaling , Fc-epsilon Receptor Signaling Pathway , Neurotrophin Signaling Pathway , Activation of Innate immune Response , Hepatitis C , Toll-Like Receptors Cascades , Signaling of Hepatocyte Growth Factor Receptor , S100 Proteins

Application Details

Application Notes:	Approved: ELISA, IHC, IHC-P (5 µg/mL), IP, WB Usage: Western Blot: Transfected lysate, Recombinant protein.
Comment:	Target Species of Antibody: Human
Restrictions:	For Research Use only

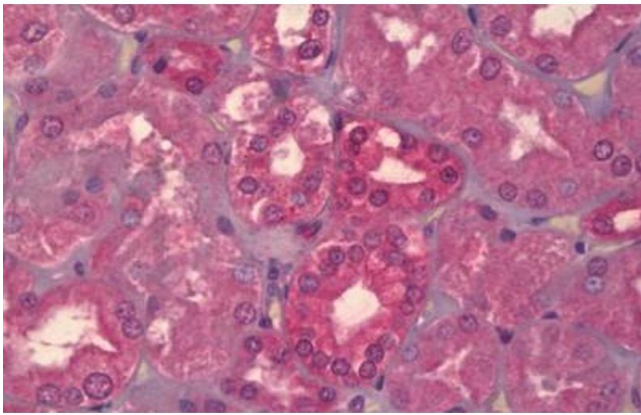
Handling

Format:	Liquid
Concentration:	Lot specific
Buffer:	PBS, pH 7.4
Handling Advice:	avoid freeze thaw cycles.
Storage:	4 °C,-20 °C
Storage Comment:	Short term 4°C, long term aliquot and store at -20°C, avoid freeze-thaw cycles.



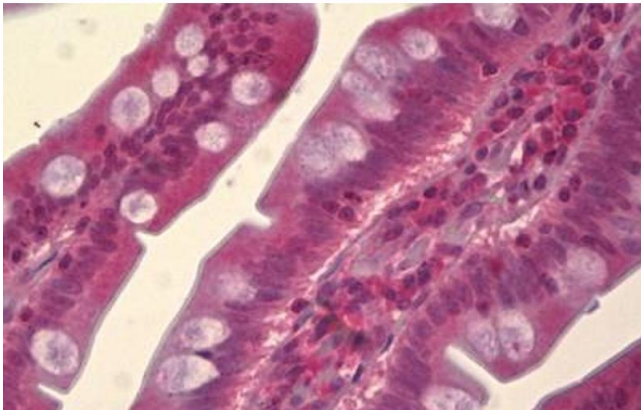
Immunohistochemistry

Image 1. Anti-MAPK8 / JNK1 antibody IHC of human kidney. Immunohistochemistry of formalin-fixed, paraffin-embedded tissue after heat-induced antigen retrieval. Antibody concentration 5 ug/ml.



Immunohistochemistry

Image 2. Anti-MAPK8 / JNK1 antibody IHC staining of human kidney. Immunohistochemistry of formalin-fixed, paraffin-embedded tissue after heat-induced antigen retrieval. Antibody ABIN961545 concentration 5 ug/ml.



Immunohistochemistry

Image 3. Anti-MAPK8 / JNK1 antibody IHC staining of human small intestine. Immunohistochemistry of formalin-fixed, paraffin-embedded tissue after heat-induced antigen retrieval. Antibody ABIN961545 concentration 5 ug/ml.