



[Go to Product page](#)

Datasheet for ABIN961593  
**anti-PPP2R1A antibody**

2 Images

Overview

Quantity:	50 µg
Target:	PPP2R1A
Reactivity:	Human
Host:	Mouse
Clonality:	Monoclonal
Conjugate:	This PPP2R1A antibody is un-conjugated
Application:	Western Blotting (WB), ELISA, Immunohistochemistry (IHC), Immunohistochemistry (Paraffin-embedded Sections) (IHC (p))

Product Details

Brand:	IHC-plus™
Immunogen:	Recombinant protein Type of Immunogen: Recombinant protein
Clone:	4E6
Isotype:	IgG1 kappa
Specificity:	Human PPP2R1A
Purification:	Purified from ascites by Protein A

Target Details

Target:	PPP2R1A
---------	---------

## Target Details

---

Alternative Name:	PPP2R1A ( <a href="#">PPP2R1A Products</a> )
Background:	Name/Gene ID: PPP2R1A  Synonyms: PPP2R1A, PP2A-Aalpha, PP2AAALPHA, PR65A
Gene ID:	5518
UniProt:	<a href="#">P30153</a>
Pathways:	<a href="#">PI3K-Akt Signaling</a> , <a href="#">Mitotic G1-G1/S Phases</a> , <a href="#">M Phase</a> , <a href="#">Hepatitis C</a> , <a href="#">Toll-Like Receptors Cascades</a>

## Application Details

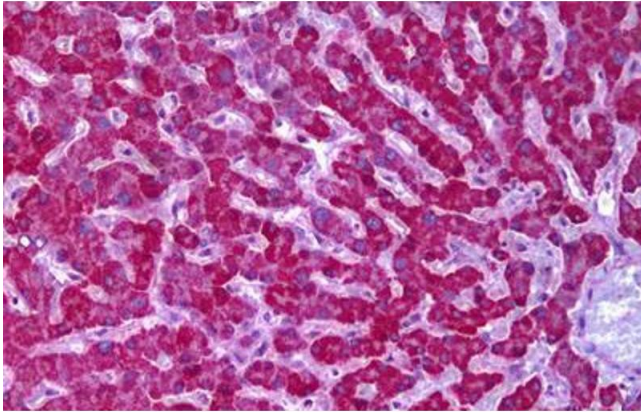
---

Application Notes:	Approved: ELISA, IHC, IHC-P (5 µg/mL), WB (1:500 - 1:1000)  Usage: Sandwich ELISA: Recombinant protein. Western Blot: Cell lysate.
Comment:	Target Species of Antibody: Human
Restrictions:	For Research Use only

## Handling

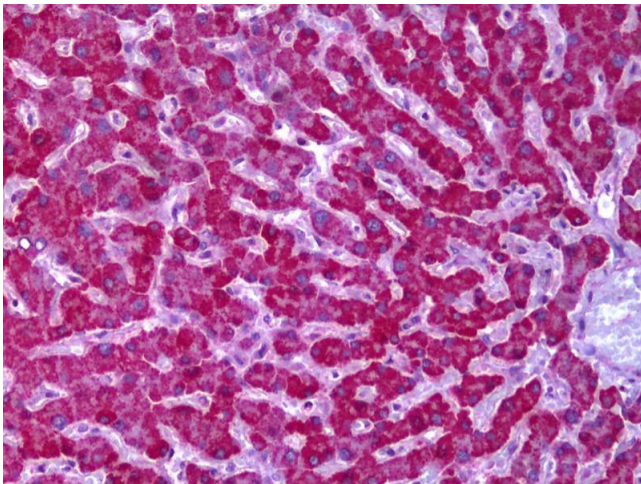
---

Format:	Liquid
Concentration:	Lot specific
Buffer:	PBS, pH 7.4
Handling Advice:	avoid freeze thaw cycles.
Storage:	4 °C, -20 °C
Storage Comment:	Short term 4°C, long term aliquot and store at -20°C, avoid freeze-thaw cycles.



#### Immunohistochemistry

**Image 1.** Anti-PPP2R1A antibody IHC staining of human liver. Immunohistochemistry of formalin-fixed, paraffin-embedded tissue after heat-induced antigen retrieval. Antibody ABIN961593 concentration 5 ug/ml.



#### Immunohistochemistry

**Image 2.** Anti-PPP2R1A antibody IHC of human liver. Immunohistochemistry of formalin-fixed, paraffin-embedded tissue after heat-induced antigen retrieval. Antibody concentration 5 ug/ml.