

Datasheet for ABIN961619

anti-KDELR antibody

2 Images

[Go to Product page](#)

Overview

Quantity:	50 µg
Target:	KDELR
Reactivity:	Cow, Human, Mouse, Rat, Chicken, Drosophila melanogaster, Dog, Hamster, Monkey, Pig, Rabbit, Sheep, Xenopus laevis
Host:	Mouse
Clonality:	Monoclonal
Conjugate:	This KDELR antibody is un-conjugated
Application:	Western Blotting (WB), Immunohistochemistry (IHC), Immunocytochemistry (ICC), Immunohistochemistry (Paraffin-embedded Sections) (IHC (p)), ELISA

Product Details

Brand:	IHC-plus™
Immunogen:	Synthetic peptide corresponding to 21aa of bovine KDEL receptor (KLH). Type of Immunogen: Synthetic peptide - KLH conjugated
Isotype:	IgG1
Specificity:	Recognizes bovine KDEL receptor at ~25kD. Species cross-reactivity: human, monkey, mouse, rat, hamster, rabbit, porcine, sheep, canine, chicken, Drosophila, Xenopus.
Purification:	Protein G purified

Target Details

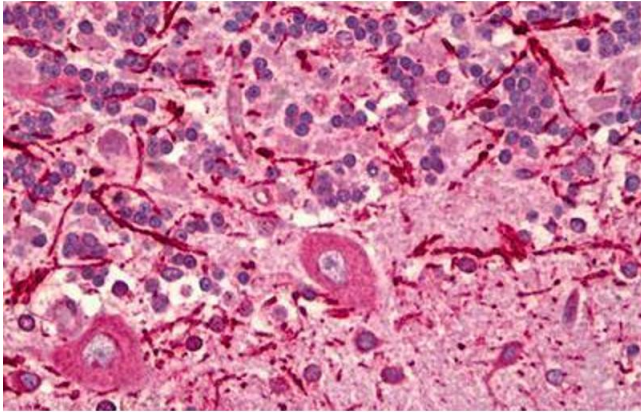
Target:	KDEL _R
Alternative Name:	KDEL _R / KDEL Receptor (KDEL_R Products)
Pathways:	Maintenance of Protein Location

Application Details

Application Notes:	Approved: ELISA, ICC, IHC, IHC-P (10 µg/mL), WB (1:1000) Usage: Suitable for use in ELISA, Western Blot, Immunohistochemistry and Immunocytochemistry. Western Blot: 1:1000.
Comment:	Target Species of Antibody: Bovine
Restrictions:	For Research Use only

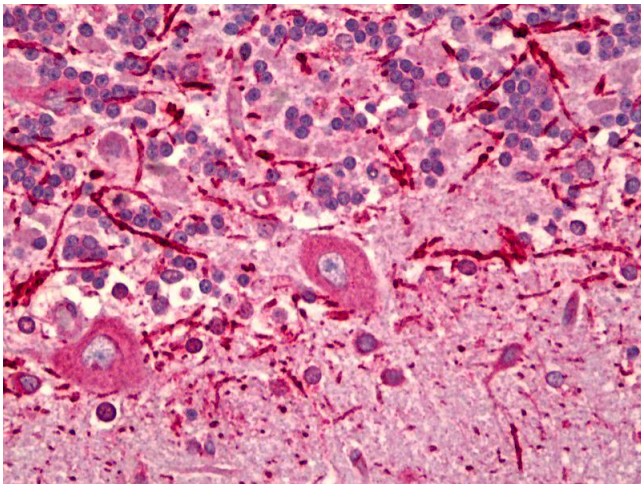
Handling

Format:	Liquid
Concentration:	Lot specific
Buffer:	PBS, pH 7.2, 0.09 % sodium azide, 50 % glycerol
Preservative:	Sodium azide
Precaution of Use:	This product contains Sodium azide: a POISONOUS AND HAZARDOUS SUBSTANCE which should be handled by trained staff only.
Storage:	4 °C, -20 °C
Storage Comment:	May be stored at 4°C for short-term only. For long-term storage, aliquot and store at -20°C. Aliquots are stable for at least 1 year at -20°C.



Immunohistochemistry

Image 1. Anti-KDEL Receptor antibody IHC staining of human brain, cerebellum. Immunohistochemistry of formalin-fixed, paraffin-embedded tissue after heat-induced antigen retrieval. Antibody ABIN961619 concentration 10 ug/ml.



Immunohistochemistry

Image 2. Anti-KDEL Receptor antibody IHC of human brain, cerebellum. Immunohistochemistry of formalin-fixed, paraffin-embedded tissue after heat-induced antigen retrieval. Antibody concentration 10 ug/ml.