

Datasheet for ABIN961778
anti-GJB2 antibody (C-Term)

2 Images

[Go to Product page](#)

Overview

Quantity:	50 µg
Target:	GJB2
Binding Specificity:	C-Term
Reactivity:	Human, Mouse, Rat
Host:	Mouse
Clonality:	Monoclonal
Conjugate:	This GJB2 antibody is un-conjugated
Application:	Western Blotting (WB), ELISA, Immunohistochemistry (IHC), Immunofluorescence (IF), Immunohistochemistry (Paraffin-embedded Sections) (IHC (p))

Product Details

Brand:	IHC-plus™
Immunogen:	A 13 amino acid synthetic peptide derived from the C-terminus of the mouse Connexin 26 protein. This mouse sequence differs from the rat sequence by a single amino acid and from the human sequence by two (non-consecutive) amino acids. Type of Immunogen: Synthetic peptide
Isotype:	IgG2a kappa
Specificity:	Detects the Connexin 26 protein. No cross-reactivity with the closely related Connexin 30 protein has been observed.
Purification:	Protein A purified

Target Details

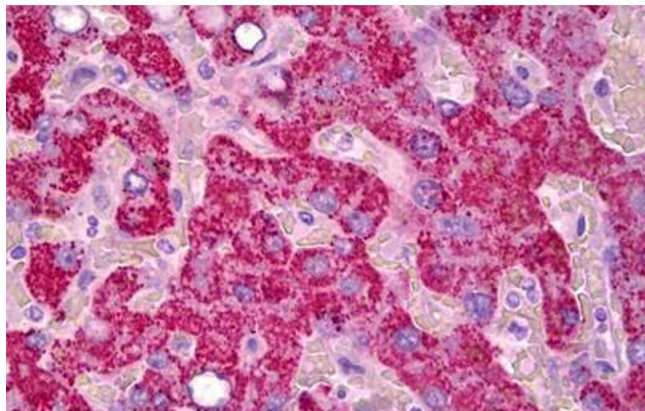
Target:	GJB2
Alternative Name:	GJB2 / CX26 / Connexin 26 (GJB2 Products)
Background:	Name/Gene ID: GJB2 Subfamily: Connexin Family: Ion Channel Synonyms: GJB2, Connexin 26, Connexin-26, DFNB1A, DFNA3, DFNB1, Gap junction protein beta 2, KID, HID, PPK, NSRD1, CX26, DFNA3A
Gene ID:	2706
UniProt:	P29033
Pathways:	Sensory Perception of Sound , Cell-Cell Junction Organization

Application Details

Application Notes:	Approved: ELISA (1:500), IF (1:60 - 1:250), IHC, IHC-P (10 µg/mL), WB (1:250 - 1:1000) Usage: Antibody reactivity was confirmed by Western blotting using lysates derived from mouse liver, rat liver and rat brain. Antibody was tested for IHC-P using human FFPE tissues.
Comment:	Target Species of Antibody: Mouse
Restrictions:	For Research Use only

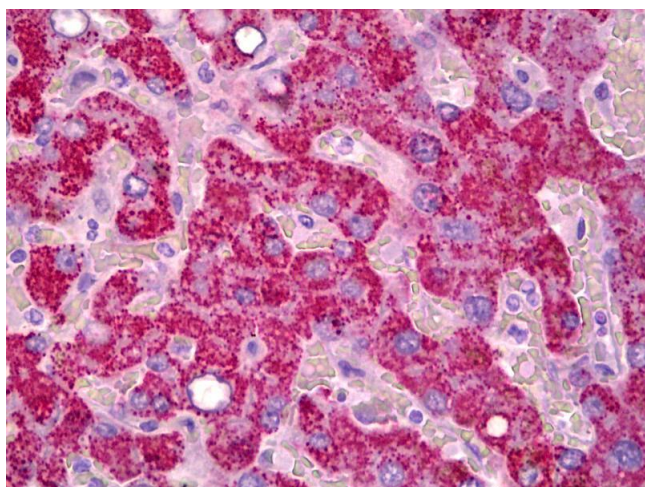
Handling

Format:	Liquid
Concentration:	Lot specific
Buffer:	PBS, pH 7.4, 0.09 % sodium azide.
Preservative:	Sodium azide
Precaution of Use:	This product contains Sodium azide: a POISONOUS AND HAZARDOUS SUBSTANCE which should be handled by trained staff only.
Handling Advice:	avoid freeze thaw cycles.
Storage:	4 °C,-20 °C
Storage Comment:	Short term 4°C, long term aliquot and store at -20°C, avoid freeze-thaw cycles.



Immunohistochemistry

Image 1. Anti-GJB2 antibody IHC staining of human liver. Immunohistochemistry of formalin-fixed, paraffin-embedded tissue after heat-induced antigen retrieval. Antibody ABIN961778 concentration 10 ug/ml.



Immunohistochemistry

Image 2. Anti-GJB2 antibody IHC of human liver. Immunohistochemistry of formalin-fixed, paraffin-embedded tissue after heat-induced antigen retrieval. Antibody concentration 10 ug/ml.