



[Go to Product page](#)

Datasheet for ABIN961783

anti-TSC1 antibody

1 Image

Overview

Quantity:	50 µg
Target:	TSC1
Reactivity:	Human
Host:	Mouse
Clonality:	Monoclonal
Conjugate:	This TSC1 antibody is un-conjugated
Application:	ELISA, Western Blotting (WB), Immunohistochemistry (IHC), Immunohistochemistry (Paraffin-embedded Sections) (IHC (p)), Immunoprecipitation (IP)

Product Details

Brand:	IHC-plus™
Immunogen:	Recombinant human Hamartin protein. Type of Immunogen: Recombinant protein
Isotype:	IgG1
Specificity:	Specific for the ~130-150kD Hamartin protein and shows no reactivity with the related Tuberin protein. This specificity was confirmed with Western blot testing on both Hamartin- and Tuberin-transfected cell lysates. Reactivity was confirmed with a Hamartin-transfected 293 cell line. Species cross-reactivity: human.
Purification:	Protein A purified

Target Details

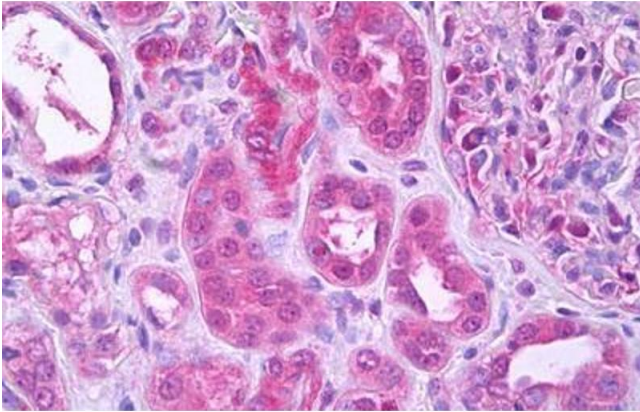
Target:	TSC1
Alternative Name:	Hamartin / TSC1 (TSC1 Products)
Background:	Name/Gene ID: TSC1 Synonyms: TSC1, LAM, Tuberous sclerosis 1 protein, Tuberous sclerosis 1, Hamartin, KIAA0243, TSC, Tumor suppressor
Gene ID:	7248
UniProt:	Q92574
Pathways:	RTK Signaling , AMPK Signaling , Regulation of Cell Size , Tube Formation

Application Details

Application Notes:	Approved: ELISA (0.1 - 1 µg/mL), IHC, IHC-P (10 µg/mL), IP (5 - 10 µg/mL), WB (1 - 3 µg/mL) Usage: Suitable for use in ELISA, Western Blot, Immunoprecipitation. ELISA: 0.1-1 µg/mL. Western Blot: 1-3 µg/mL. Immunoprecipitation: 5-10 µg/mL.
Comment:	Target Species of Antibody: Human
Restrictions:	For Research Use only

Handling

Format:	Liquid
Concentration:	Lot specific
Buffer:	PBS, pH 7.2, 0.1 % sodium azide.
Preservative:	Sodium azide
Precaution of Use:	This product contains Sodium azide: a POISONOUS AND HAZARDOUS SUBSTANCE which should be handled by trained staff only.
Handling Advice:	avoid freeze thaw cycles. Store undiluted.
Storage:	4 °C, -20 °C
Storage Comment:	Short term 4°C, long term aliquot and store at -20°C, avoid freeze-thaw cycles. Store undiluted.



Immunohistochemistry

Image 1. Anti-TSC1 antibody IHC staining of human kidney, tubules. Immunohistochemistry of formalin-fixed, paraffin-embedded tissue after heat-induced antigen retrieval. Antibody ABIN961783 concentration 10 ug/ml.