



Datasheet for ABIN962011  
**anti-TFPI antibody (AA 29-44)**



[Go to Product page](#)

3 Images

Overview

Quantity:	50 µg
Target:	TFPI
Binding Specificity:	AA 29-44
Reactivity:	Human
Host:	Mouse
Clonality:	Monoclonal
Conjugate:	This TFPI antibody is un-conjugated
Application:	Western Blotting (WB), Immunohistochemistry (IHC), ELISA, Immunohistochemistry (Paraffin-embedded Sections) (IHC (p))

Product Details

Brand:	IHC-plus™
Immunogen:	Amino acids Asp-Ser-Glu-Glu-Asp-Glu-Glu-His-Thr-Ile-Ile-Thr-Asp-Thr-Glu -(Cys) corresponding to aa 29-44 of the prototype P10646.
Isotype:	IgG
Specificity:	Recognizes Human Tissue Factor Pathway Inhibitor.
Purification:	Purified

Target Details

Target:	TFPI
---------	------

## Target Details

---

Alternative Name: TFPI /LACI ([TFPI Products](#))

Background: Name/Gene ID: TFPI

Synonyms: TFPI, Anti-convertin, Extrinsic pathway inhibitor, EPI, LACI, TFI, TFPI1

Gene ID: 7035

UniProt: [P10646](#)

## Application Details

---

Application Notes: Approved: ELISA, IHC, IHC-P (10 µg/mL), WB

Usage: Suitable for use in ELISA and Western Blot.

Comment: Target Species of Antibody: Human

Restrictions: For Research Use only

## Handling

---

Format: Liquid

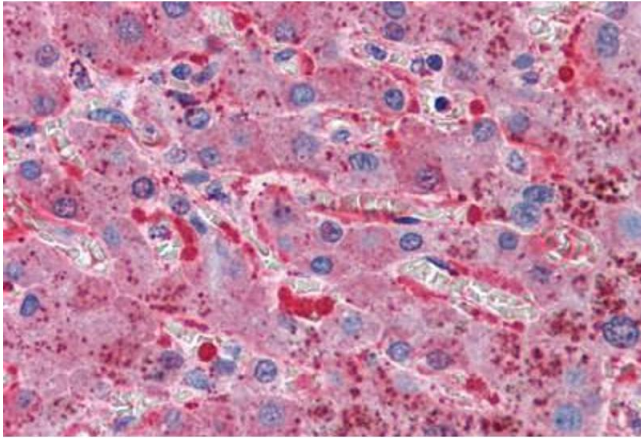
Concentration: Lot specific

Buffer: ddH2O, 50 % glycerol. Sourced from ascites.

Handling Advice: avoid freeze thaw cycles.

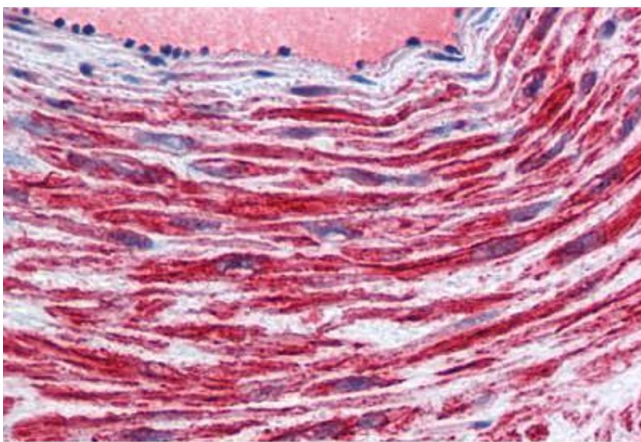
Storage: 4 °C,-20 °C

Storage Comment: Short term 4°C, long term aliquot and store at -20°C, avoid freeze-thaw cycles.



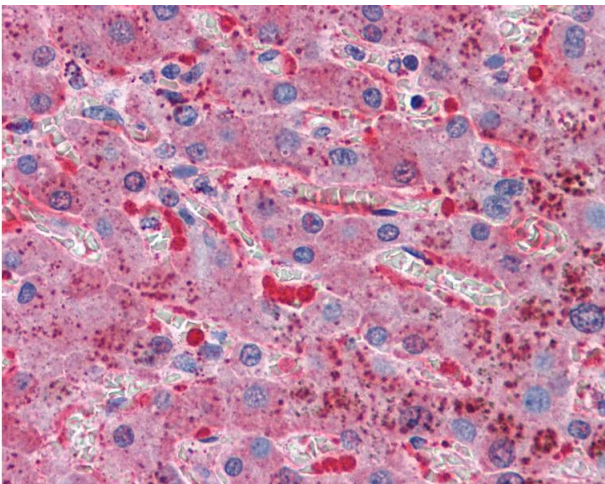
#### Immunohistochemistry

**Image 1.** Anti-TFPI antibody IHC staining of human liver. Immunohistochemistry of formalin-fixed, paraffin-embedded tissue after heat-induced antigen retrieval. Antibody ABIN962011 concentration 10 ug/ml.



#### Immunohistochemistry

**Image 2.** Anti-TFPI antibody IHC staining of human vessel. Immunohistochemistry of formalin-fixed, paraffin-embedded tissue after heat-induced antigen retrieval. Antibody ABIN962011 concentration 10 ug/ml.



#### Immunohistochemistry

**Image 3.** Anti-TFPI antibody IHC of human liver. Immunohistochemistry of formalin-fixed, paraffin-embedded tissue after heat-induced antigen retrieval. Antibody concentration 10 ug/ml.