

Datasheet for ABIN962022

anti-MYL2 antibody**2** Images[Go to Product page](#)

Overview

Quantity:	50 µg
Target:	MYL2
Reactivity:	Human, Mouse, Rat, Pig, Rabbit, Cow, Dog
Host:	Mouse
Clonality:	Monoclonal
Application:	Western Blotting (WB), ELISA, Immunohistochemistry (IHC), Immunofluorescence (IF), Immunohistochemistry (Paraffin-embedded Sections) (IHC (p)), Immunohistochemistry (Frozen Sections) (IHC (fro))

Product Details

Brand:	IHC-plus™
Immunogen:	Full length native protein (purified) (Human). Type of Immunogen: Native protein
Isotype:	IgG1 kappa
Specificity:	This antibody is myosin alpha and beta heavy chain specific. Affinity constants for: Human ventricular myosin heavy chains - 3.33 x 10x8/M Human atrial myosin heavy chains - 1.48 x 10x8 /M Human skeletal muscle myosin - 1.06 x 10x8/M Canine cardiac myosin heavy chains - 2.06 x 10x8/M. 3-48 antibody cross-reacts with heavy chains of human myosin isolated from: slow skeletal muscle, fast skeletal muscle, eye muscle, and streptococcal M5 peptide. It does not react with human platelet, smooth muscle myosin heavy chains, myosin light chains, myosin fragments circulating in blood of patients with myocardial infarction, nor does it react

Product Details

with any other human tissue antigens or blood cells. Myosin heavy chain is specific for cardiomyocytes. Species cross-reactivity: bovine, Human, Mouse, Rabbit, Rat, canine and porcine.

Purification: Purified

Target Details

Target: MYL2

Alternative Name: Myosin, Cardiac ([MYL2 Products](#))

Pathways: [Myometrial Relaxation and Contraction](#)

Application Details

Application Notes: Approved: ELISA, IF, IHC, IHC-Fr (10 µg/mL), IHC-P (5 µg/mL), WB

Usage: Suitable for use in Immunofluorescence, ELISA, Western Blot and Immunohistochemistry. Immunohistochemistry (Frozen and FFPE)

Comment: Target Species of Antibody: Human

Restrictions: For Research Use only

Handling

Format: Liquid

Concentration: Lot specific

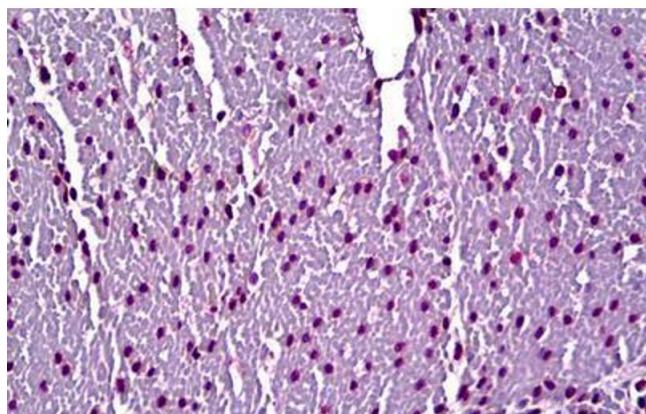
Buffer: No preservatives added.

Preservative: Without preservative

Handling Advice: avoid freeze thaw cycles.

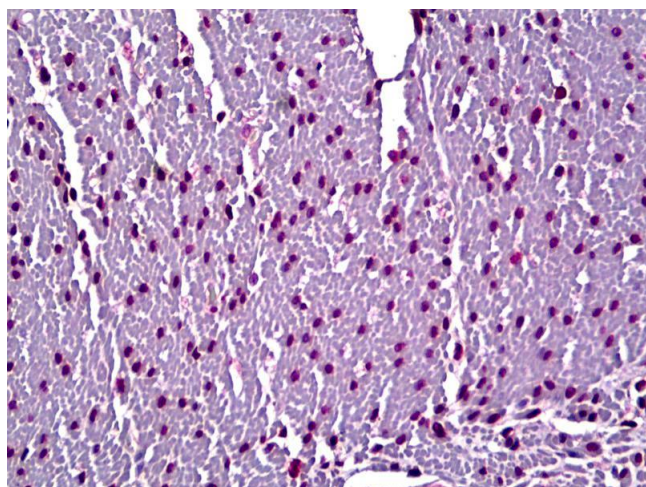
Storage: 4 °C,-20 °C

Storage Comment: Short term 4°C, long term aliquot and store at -20°C, avoid freeze-thaw cycles.



Immunohistochemistry

Image 1. Anti-Myosin, Cardiac Heavy Chain antibody IHC staining of human heart. Immunohistochemistry of formalin-fixed, paraffin-embedded tissue after heat-induced antigen retrieval. Antibody ABIN962022 concentration 5 ug/ml.



Immunohistochemistry

Image 2. Anti-Myosin, Cardiac Heavy Chain antibody IHC of human heart. Immunohistochemistry of formalin-fixed, paraffin-embedded tissue after heat-induced antigen retrieval. Antibody concentration 5 ug/ml.